

@ SHEATHED WALLS:
APPROVED 1/4" #12 LOW-PROFILE
FASTENERS, 3 PER CLIP; MUST FASTEN
INTO STUDS, TYP. (BY OTHERS)

@ MASONRY WALLS:
APPROVED 1/4" LOW-PROFILE THREADED
AND COATED MASONRY FASTENERS, 3
PER CLIP, TYP. (BY OTHERS)



GREENGIRT CLIPS

www.greengirt.com

1 (269) 355-1818

SUBSTRATE: SHEATHING / MASONRY

CLADDING: -

GREENGIRT CLIP SIZE: 200

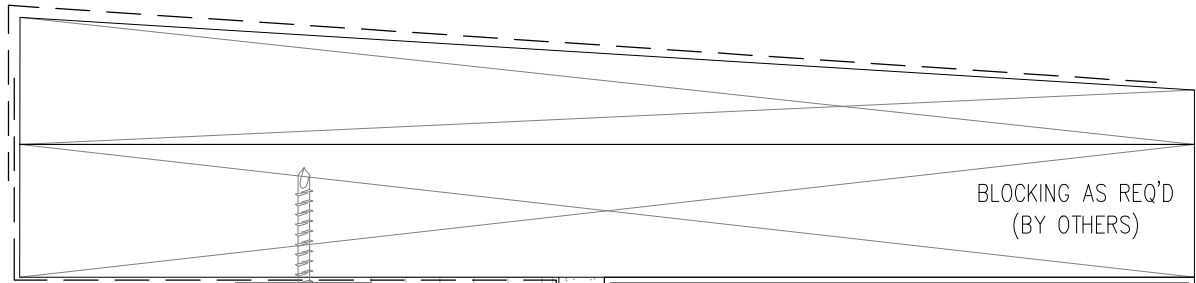
INSULATION: MINERAL WOOL

DATE: 10-25-2016

ORIENTATION: VERTICAL

WALL SECTION

NOT TO SCALE



PROVIDE A METAL ANGLE OR SIMILAR TO RETAIN MINERAL WOOL INSULATION (BY OTHERS)

MINERAL WOOL INSULATION (BY OTHERS)

WRB (BY OTHERS)

GREENGIRT CLIPS ATTACHED TO SUBSTRATE, SPACING AS REQUIRED PER LOADING CONDITIONS AND CODES; MAX. 4 SQUARE FEET PER CLIP; OVER SHEATHING, EVERY CLIP MUST BE FASTENED DIRECTLY INTO A STUD, TYP.

SHEATHING ON CFMF / WOOD FRAMING (BY OTHERS)

@ SHEATHED WALLS: APPROVED 1/4" #12 LOW-PROFILE FASTENERS, 3 PER CLIP; MUST FASTEN INTO STUDS, TYP. (BY OTHERS)

MASONRY WALL (BY OTHERS)

@ MASONRY WALLS: APPROVED 1/4" LOW-PROFILE THREADED AND COATED MASONRY FASTENERS, 3 PER CLIP, TYP. (BY OTHERS)



GREENGIRT CLIPS

www.greengirt.com

1 (269) 355-1818

SUBSTRATE: SHEATHING / MASONRY

INSULATION: MINERAL WOOL

CLADDING: -

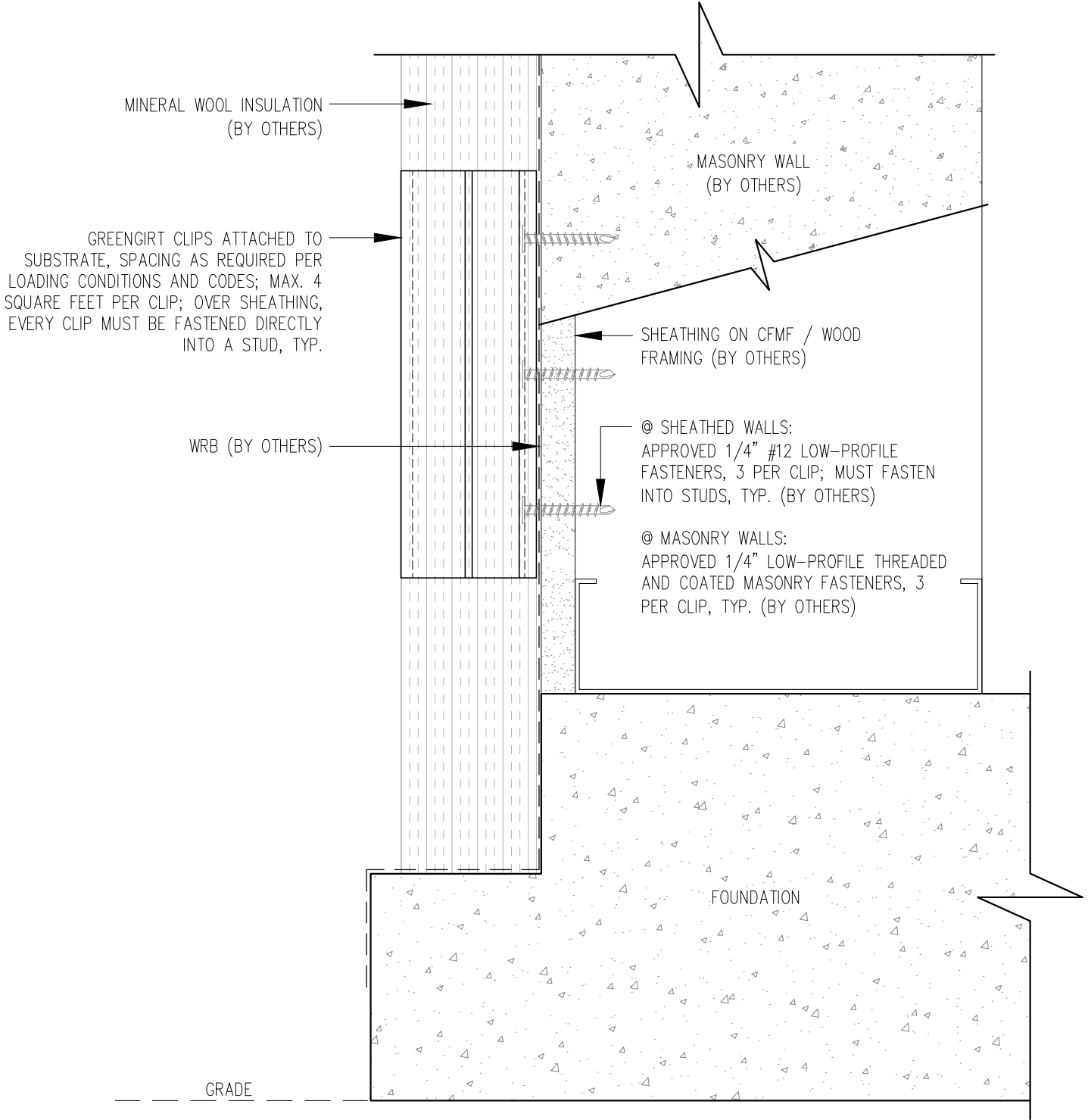
DATE: 10-25-2016

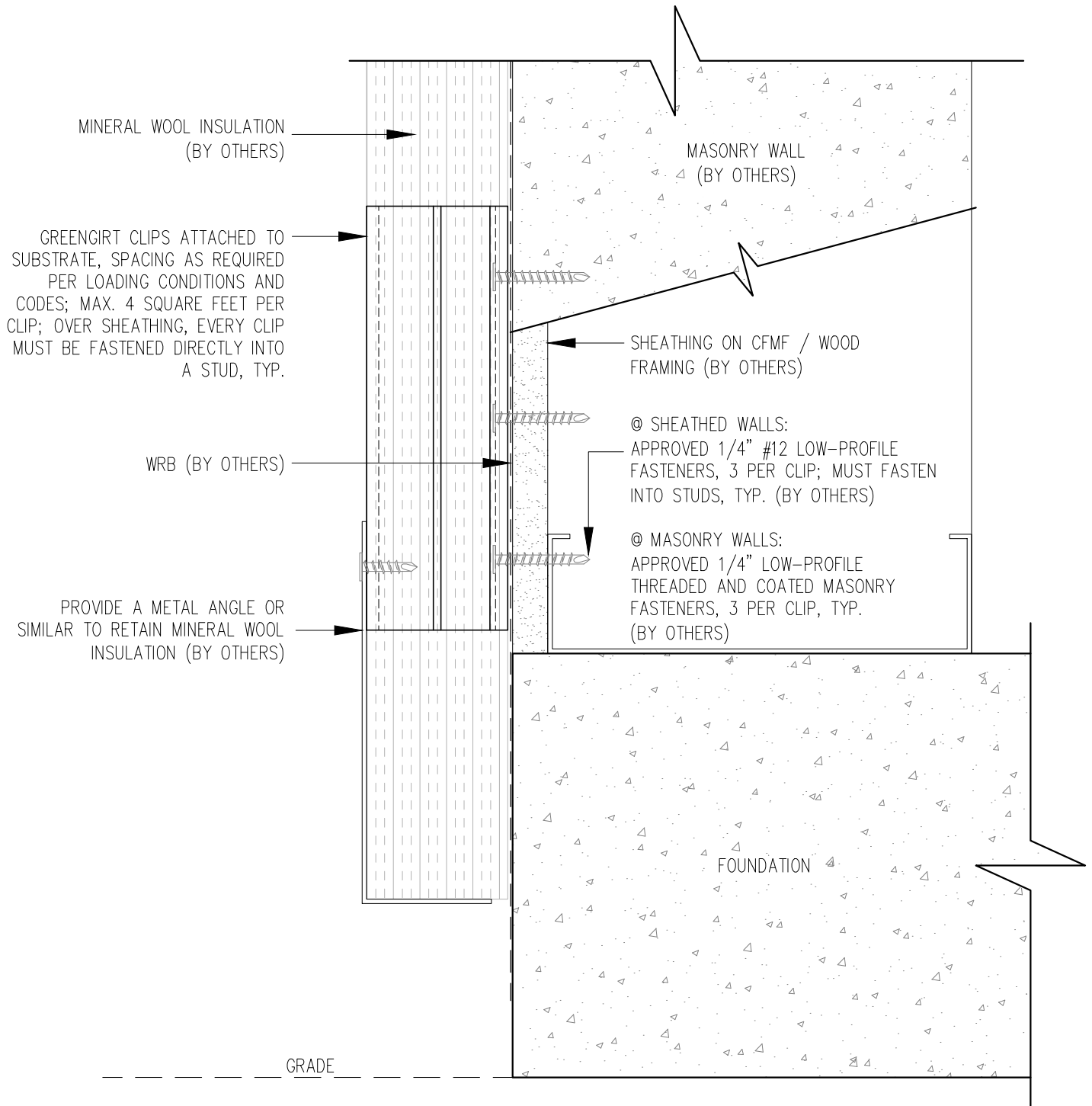
GREENGIRT CLIP SIZE: 200

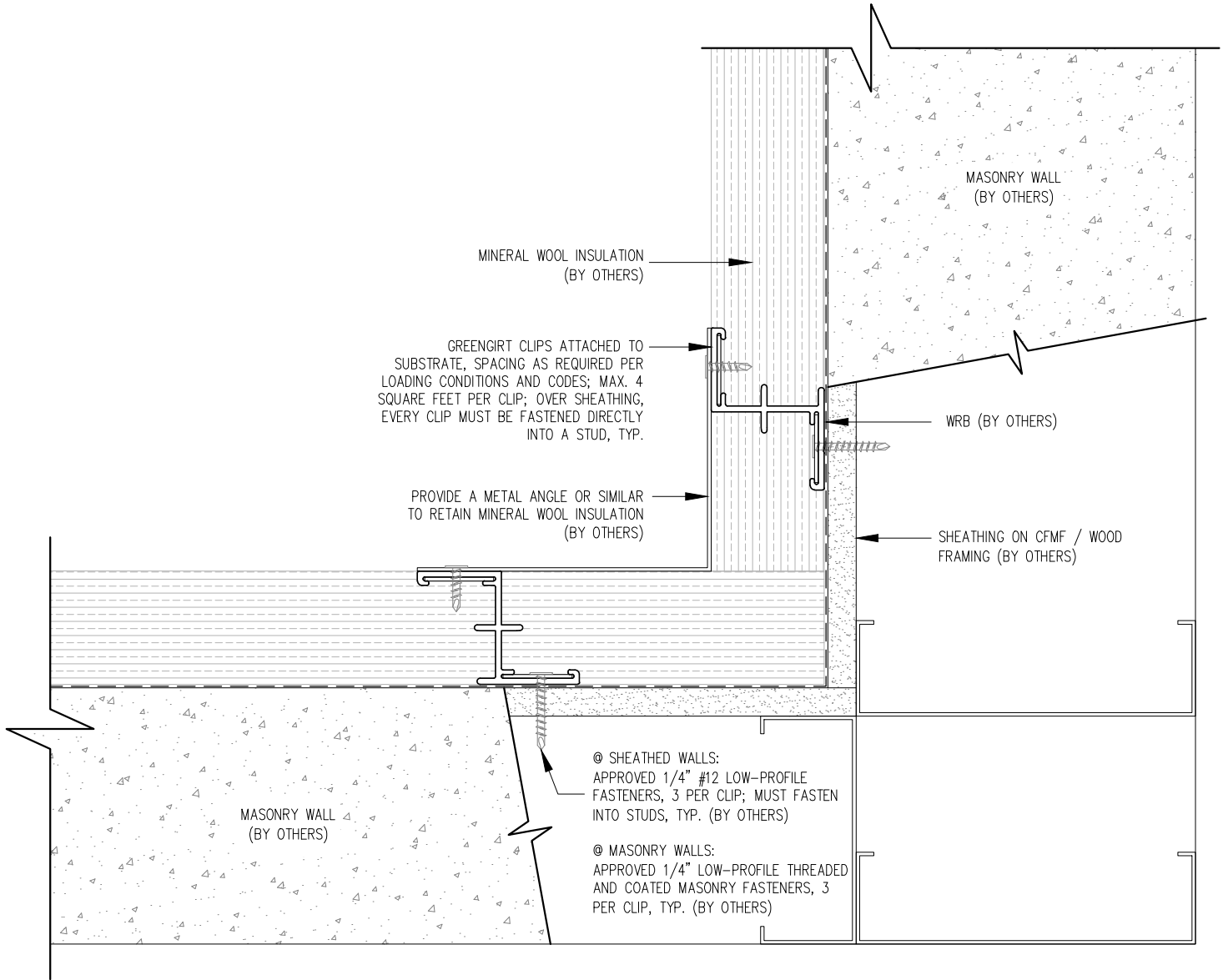
ORIENTATION: VERTICAL

PARAPET DETAIL

NOT TO SCALE







GREENGIRT CLIPS

SUBSTRATE: SHEATHING / MASONRY

CLADDING: -

GREENGIRT CLIP SIZE: 200

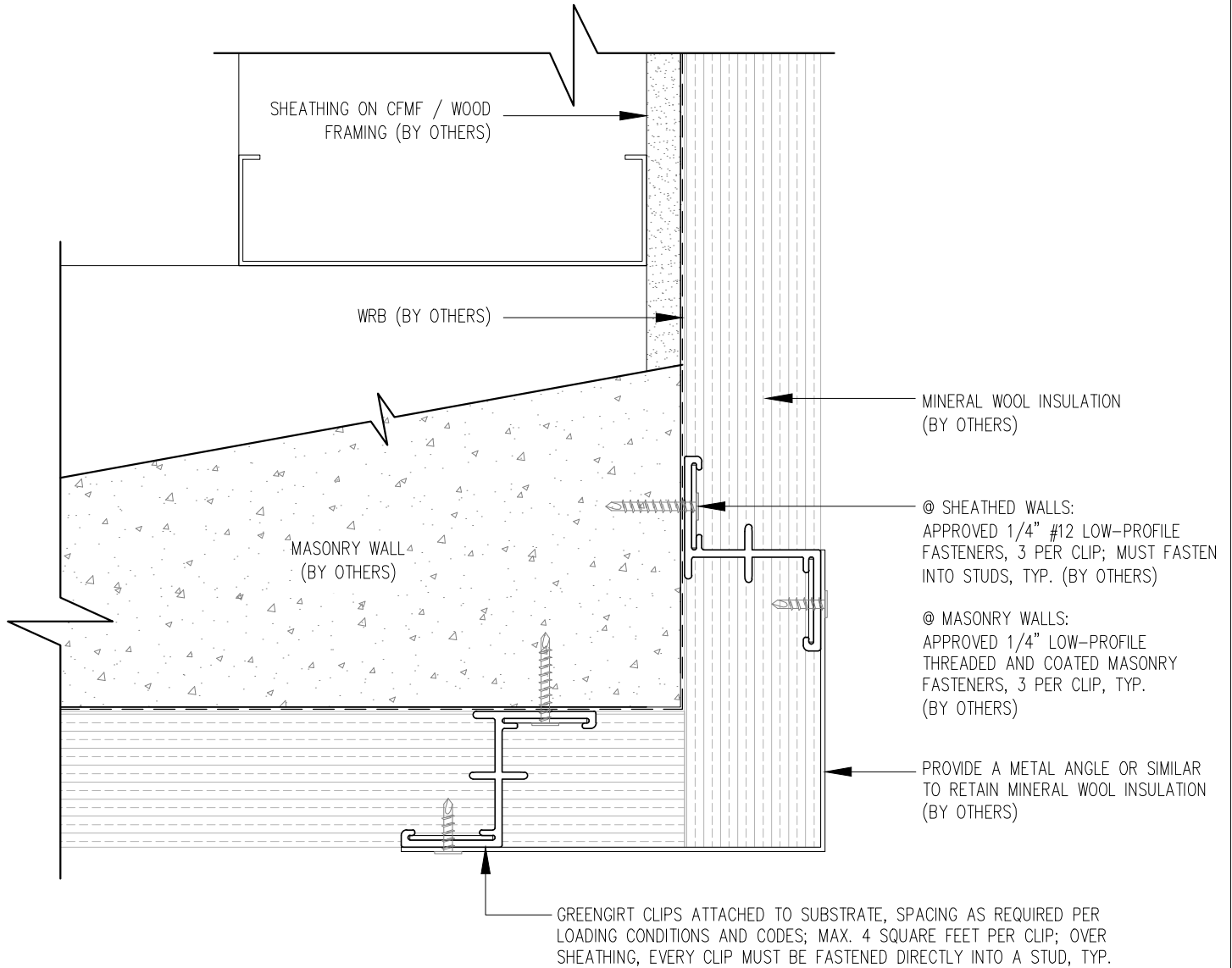
INSULATION: MINERAL WOOL

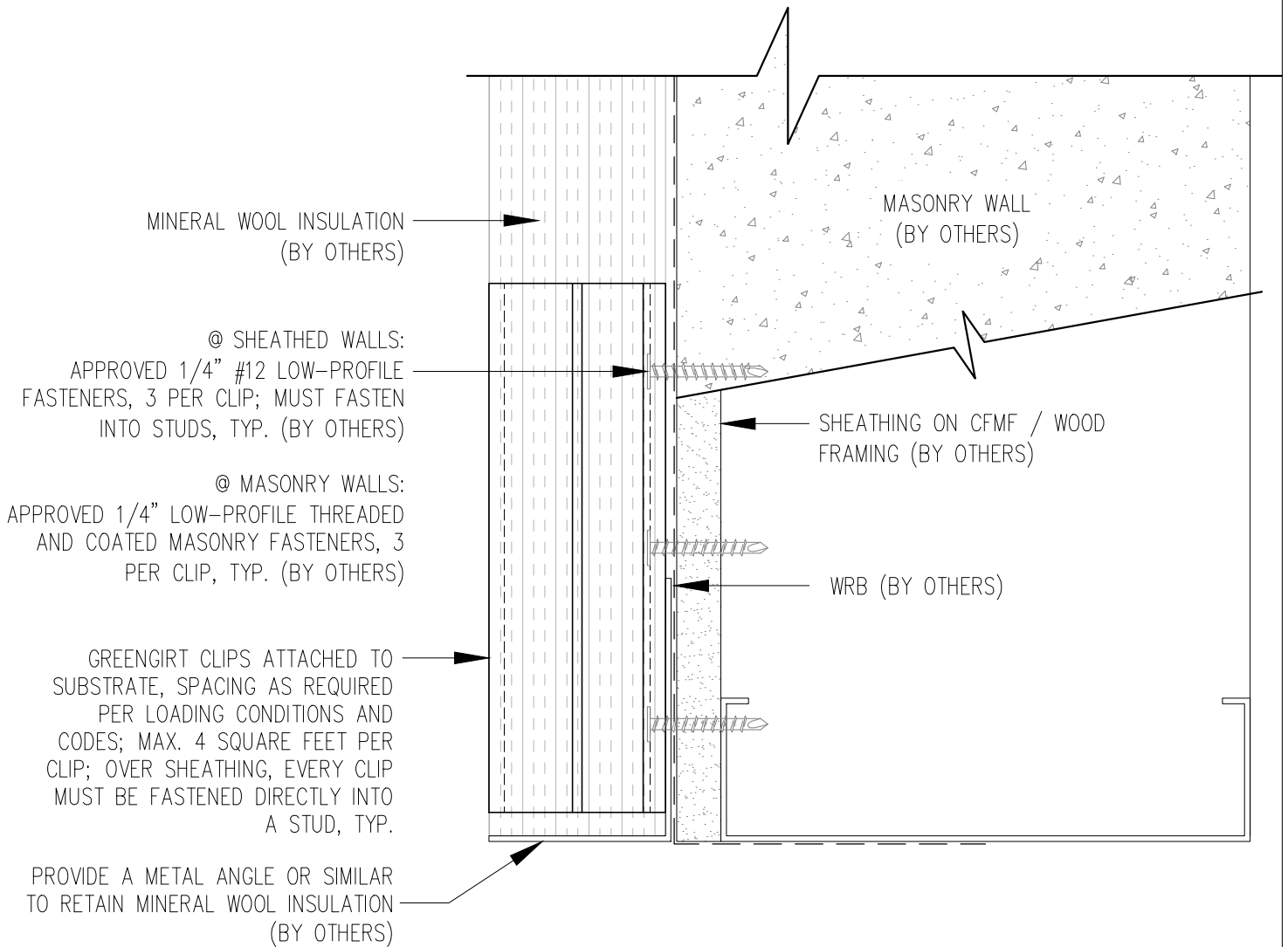
DATE: 10-25-2016

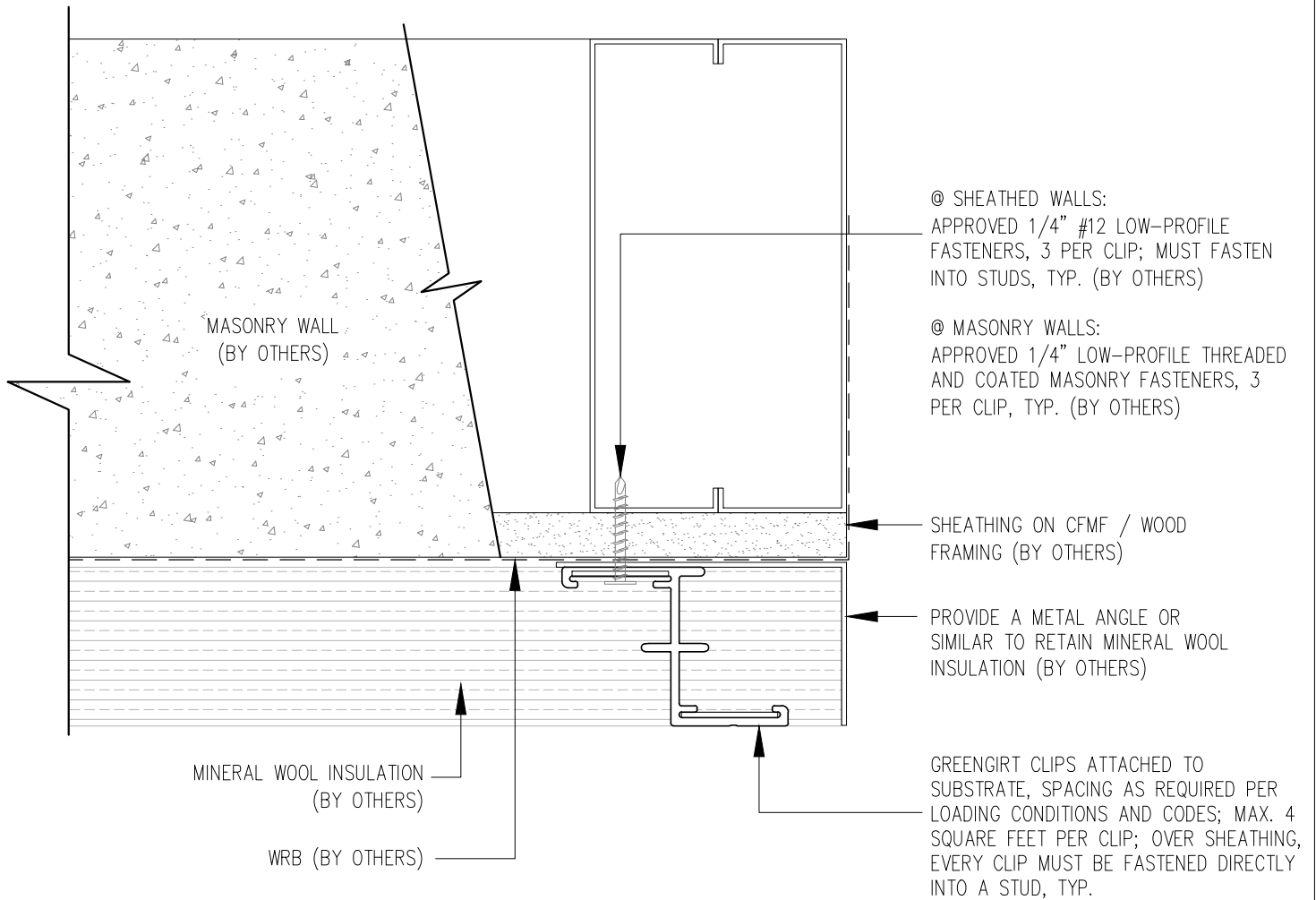
ORIENTATION: VERTICAL

INSIDE CORNER DETAIL

NOT TO SCALE







GREENGIRT CLIPS

SUBSTRATE: SHEATHING / MASONRY

CLADDING: -

GREENGIRT CLIP SIZE: 200

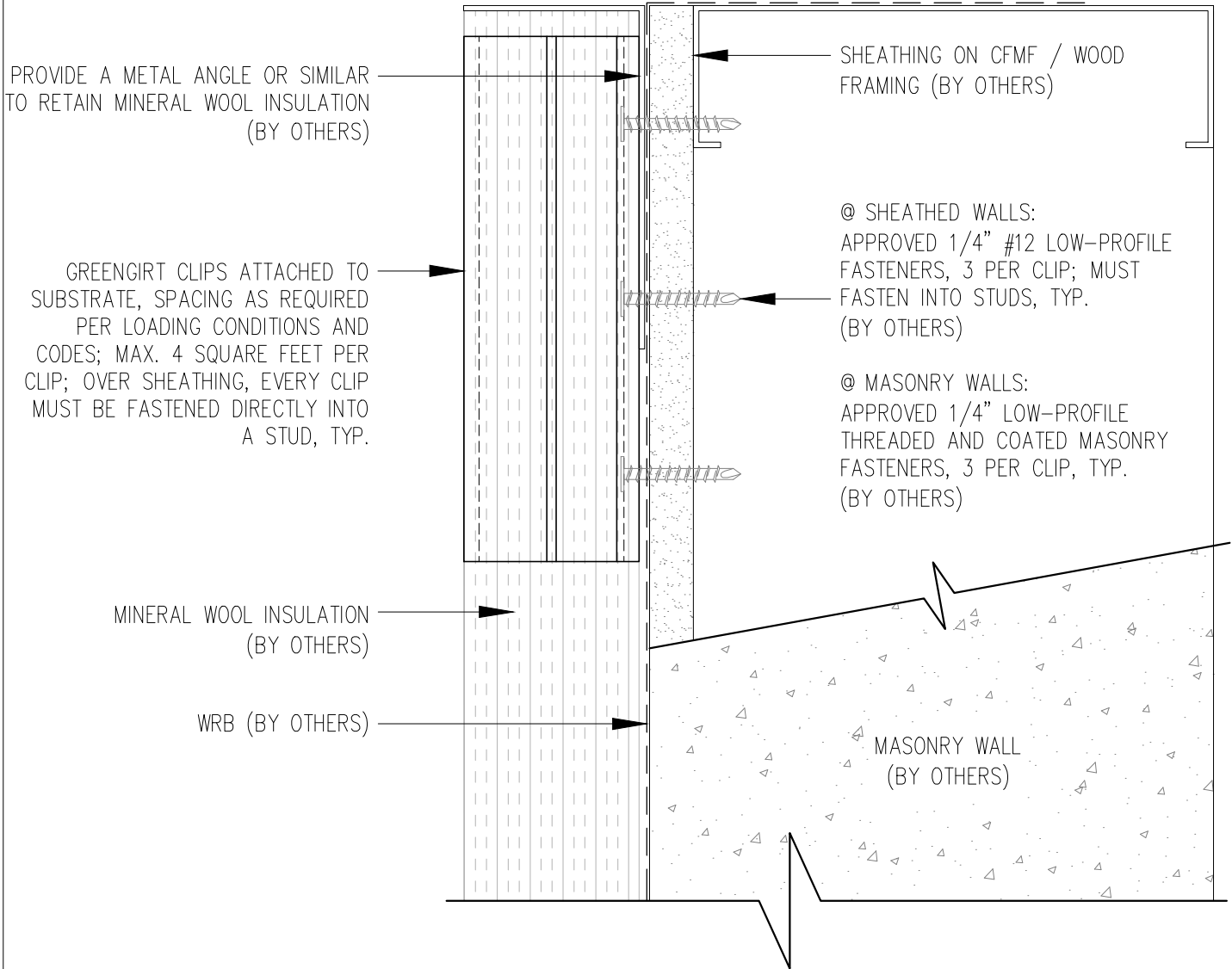
INSULATION: MINERAL WOOL

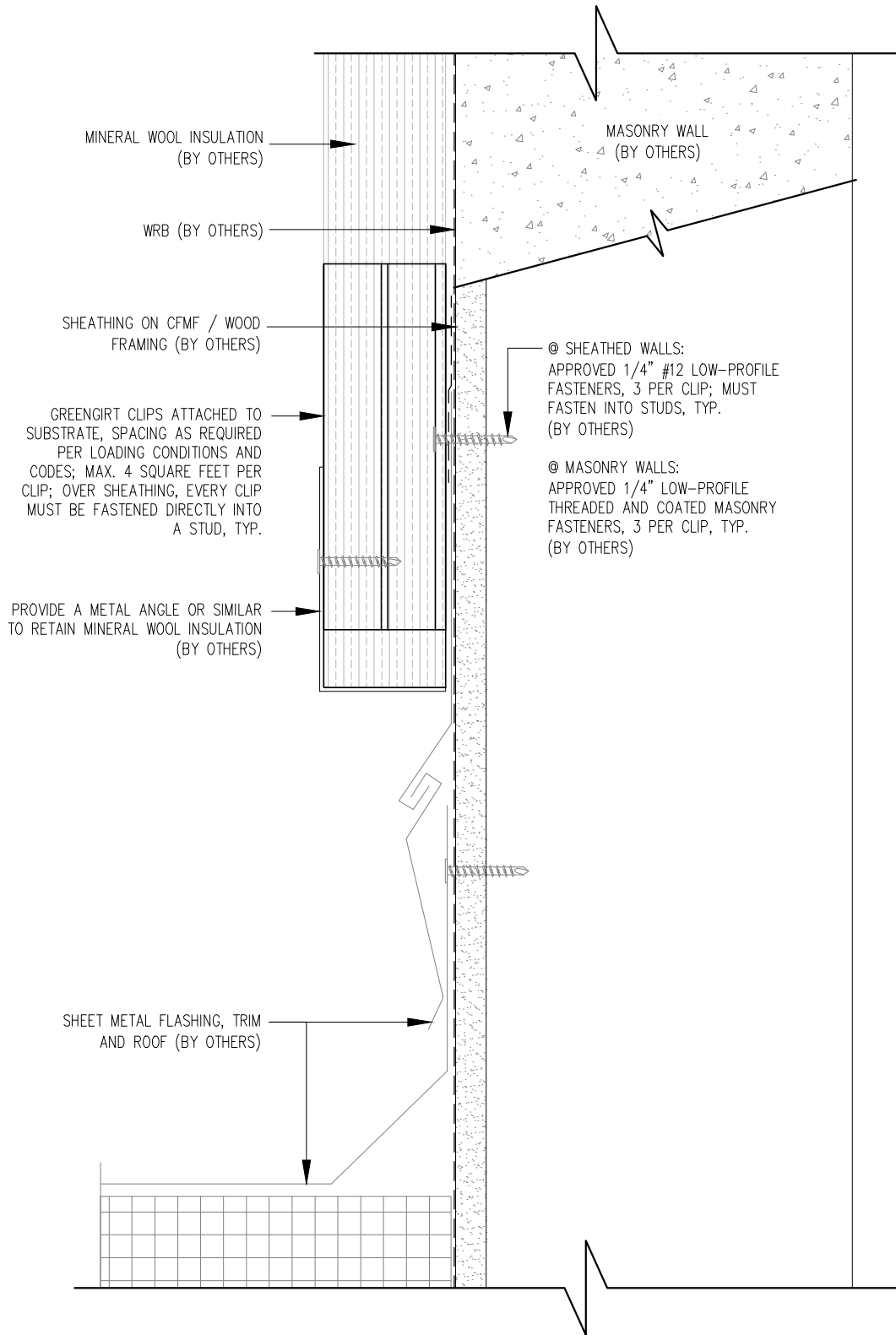
DATE: 10-25-2016

ORIENTATION: VERTICAL

JAMB DETAIL

NOT TO SCALE





GREENGIRT CLIPS

www.greengirt.com

1 (269) 355-1818

SUBSTRATE: SHEATHING / MASONRY

CLADDING: -

GREENGIRT CLIP SIZE: 200

INSULATION: MINERAL WOOL

DATE: 10-25-2016

ORIENTATION: VERTICAL

BASE AT ROOF

NOT TO SCALE