

NOTE! GREENGIRTS AND CUSTOM-PROFILED RIGID INSULATION PANELS ARE PROVIDED FOR THIS PROJECT AS THERMALLY-BROKEN, CONTINUOUS INSULATION ONLY. CUSTOMER TO PROVIDE AND INSTALL CONTINUOUS AIR/WATER AND WEATHER BARRIER SYSTEM PER SPECIFICATIONS AND MANUFACTURER'S DIRECTIONS. CONSULT SMACA AND ABAA FOR PROPER USE OF SEALANT. THIS INSTALLATION MAKES NO CLAIMS OR GUARANTEES ABOUT WEATHER TIGHTNESS, RESISTANCE OR PROTECTION.



SMARTci System

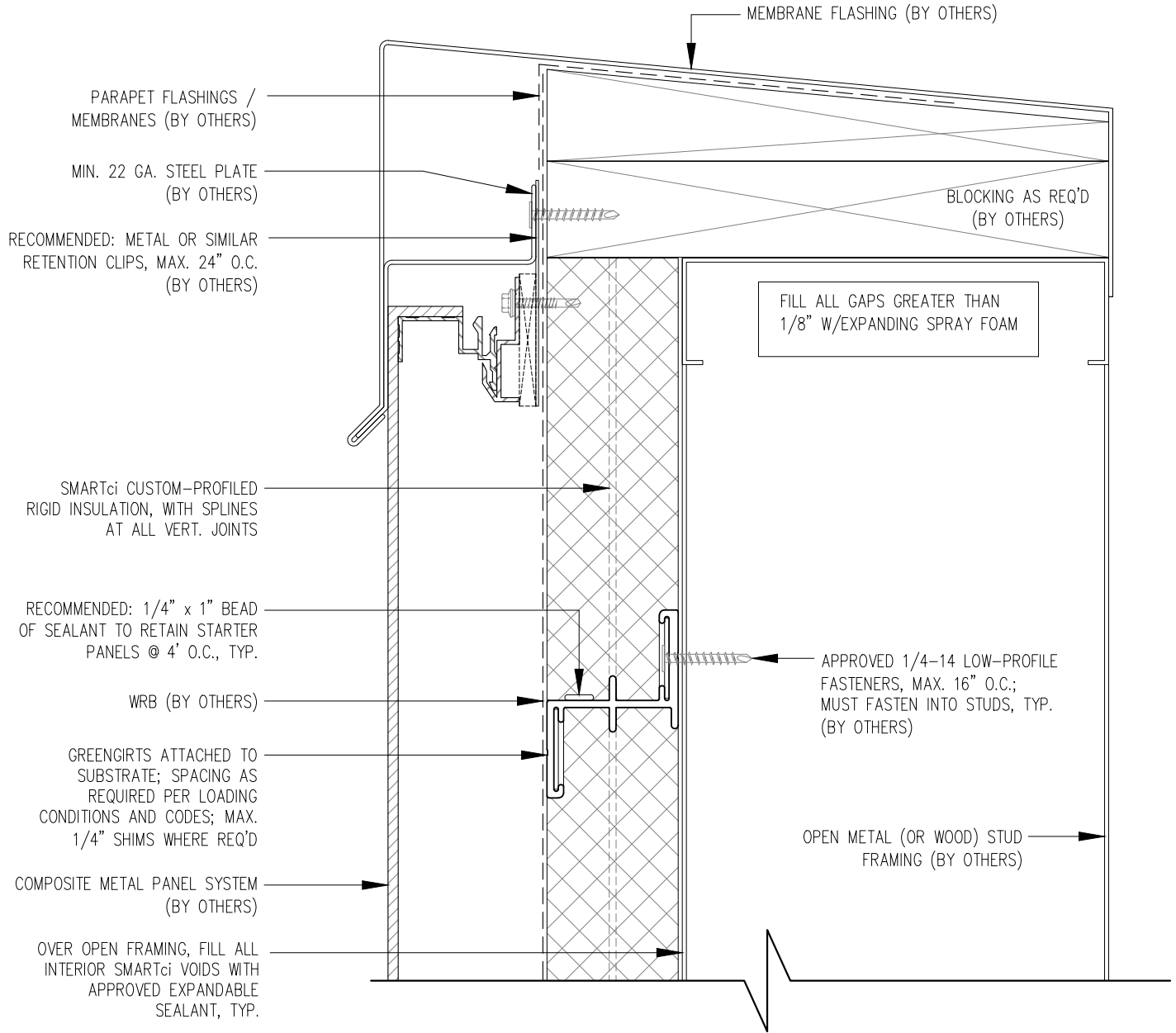
www.greengirt.com

1 (269) 355-1818

SUBSTRATE: OPEN FRAMING	SMARTci™ RIGID INSULATION PANEL
CLADDING: -ACM PANEL	DATE: 05-22-2018
SIMPLE-Z SIZE: 200	GIRT ORIENTATION: HORIZONTAL

# WALL SECTION

NOT TO SCALE



NOTE! GREENGIRTS AND CUSTOM-PROFILED RIGID INSULATION PANELS ARE PROVIDED FOR THIS PROJECT AS THERMALLY-BROKEN, CONTINUOUS INSULATION ONLY. CUSTOMER TO PROVIDE AND INSTALL CONTINUOUS AIR/WATER AND WEATHER BARRIER SYSTEM PER SPECIFICATIONS AND MANUFACTURER'S DIRECTIONS. CONSULT SMACA AND ABAA FOR PROPER USE OF SEALANT. THIS INSTALLATION MAKES NO CLAIMS OR GUARANTEES ABOUT WEATHER TIGHTNESS, RESISTANCE OR PROTECTION.



**SMARTci System**

[www.greengirt.com](http://www.greengirt.com)

1 (269) 355-1818

SUBSTRATE: OPEN FRAMING

CLADDING: -ACM PANEL

SIMPLE-Z SIZE: 200

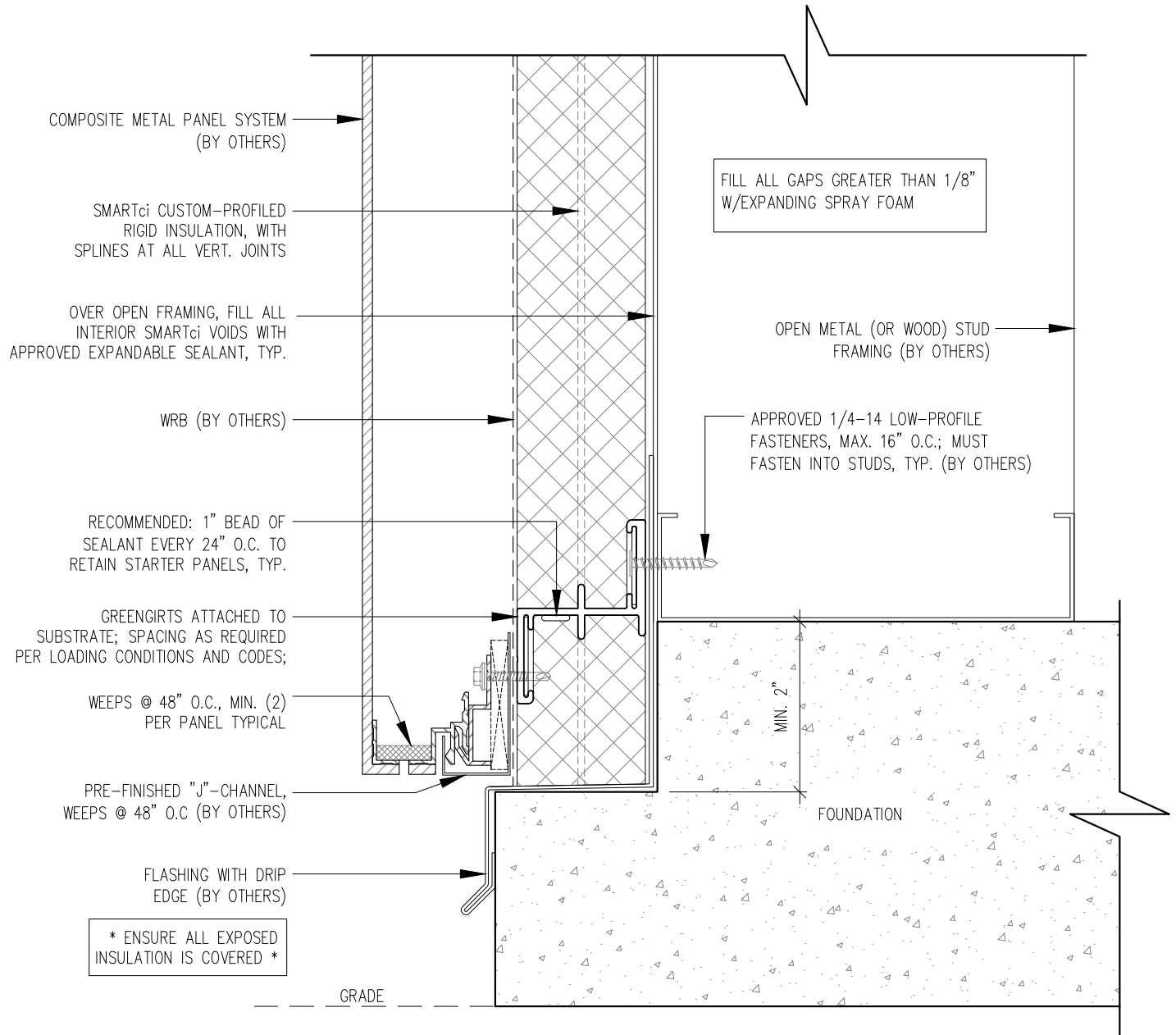
SMARTci™ RIGID INSULATION PANEL

DATE: 05-22-2018

GIRT ORIENTATION: HORIZONTAL

# PARAPET DETAIL

NOT TO SCALE



NOTE! GREENGIRTS AND CUSTOM-PROFILED RIGID INSULATION PANELS ARE PROVIDED FOR THIS PROJECT AS THERMALLY-BROKEN, CONTINUOUS INSULATION ONLY. CUSTOMER TO PROVIDE AND INSTALL CONTINUOUS AIR/WATER AND WEATHER BARRIER SYSTEM PER SPECIFICATIONS AND MANUFACTURER'S DIRECTIONS. CONSULT SMACA AND ABAA FOR PROPER USE OF SEALANT. THIS INSTALLATION MAKES NO CLAIMS OR GUARANTEES ABOUT WEATHER TIGHTNESS, RESISTANCE OR PROTECTION.



**SMARTci System**

[www.greengirt.com](http://www.greengirt.com)

1 (269) 355-1818

SUBSTRATE: OPEN FRAMING

CLADDING: -ACM PANEL

SIMPLE-Z SIZE: 200

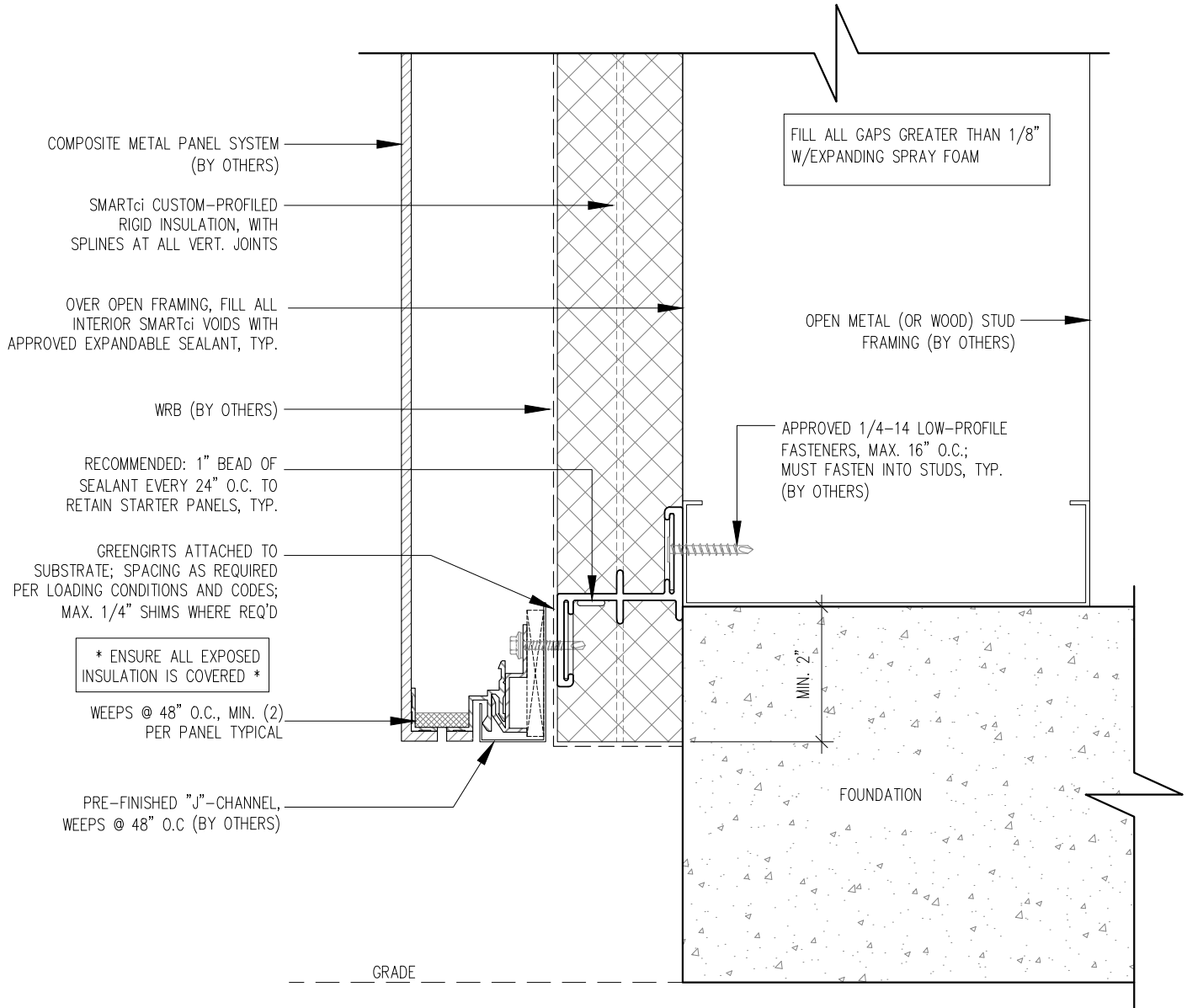
SMARTci™ RIGID INSULATION PANEL

DATE: 05-22-2018

GIRT ORIENTATION: HORIZONTAL

# FOUNDATION NOTCH DETAIL

NOT TO SCALE



NOTE! GREENGIRTS AND CUSTOM-PROFILED RIGID INSULATION PANELS ARE PROVIDED FOR THIS PROJECT AS THERMALLY-BROKEN, CONTINUOUS INSULATION ONLY. CUSTOMER TO PROVIDE AND INSTALL CONTINUOUS AIR/WATER AND WEATHER BARRIER SYSTEM PER SPECIFICATIONS AND MANUFACTURER'S DIRECTIONS. CONSULT SMACA AND ABAA FOR PROPER USE OF SEALANT. THIS INSTALLATION MAKES NO CLAIMS OR GUARANTEES ABOUT WEATHER TIGHTNESS, RESISTANCE OR PROTECTION.



SMARTci System

SUBSTRATE: OPEN FRAMING

CLADDING: -ACM PANEL

SIMPLE-Z SIZE: 200

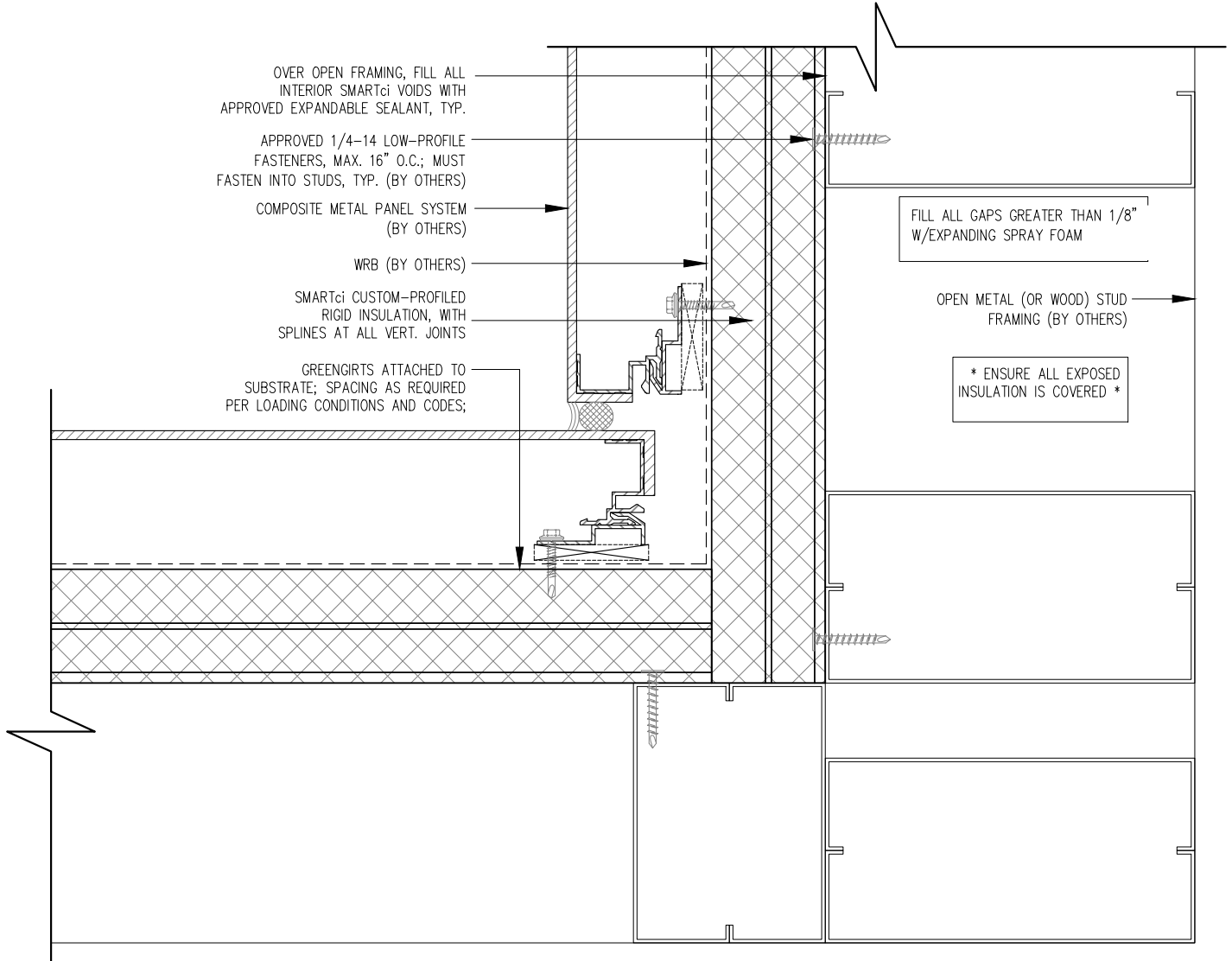
SMARTci™ RIGID INSULATION PANEL

DATE: 05-22-2018

GIRT ORIENTATION: HORIZONTAL

# FOUNDATION FLUSH DETAIL

NOT TO SCALE



NOTE! GREENGIRTS AND CUSTOM-PROFILED RIGID INSULATION PANELS ARE PROVIDED FOR THIS PROJECT AS THERMALLY-BROKEN, CONTINUOUS INSULATION ONLY. CUSTOMER TO PROVIDE AND INSTALL CONTINUOUS AIR/WATER AND WEATHER BARRIER SYSTEM PER SPECIFICATIONS AND MANUFACTURER'S DIRECTIONS. CONSULT SMACA AND ABAA FOR PROPER USE OF SEALANT. THIS INSTALLATION MAKES NO CLAIMS OR GUARANTEES ABOUT WEATHER TIGHTNESS, RESISTANCE OR PROTECTION.



SMARTci System

SUBSTRATE: OPEN FRAMING

CLADDING: -ACM PANEL

SIMPLE-Z SIZE: 200

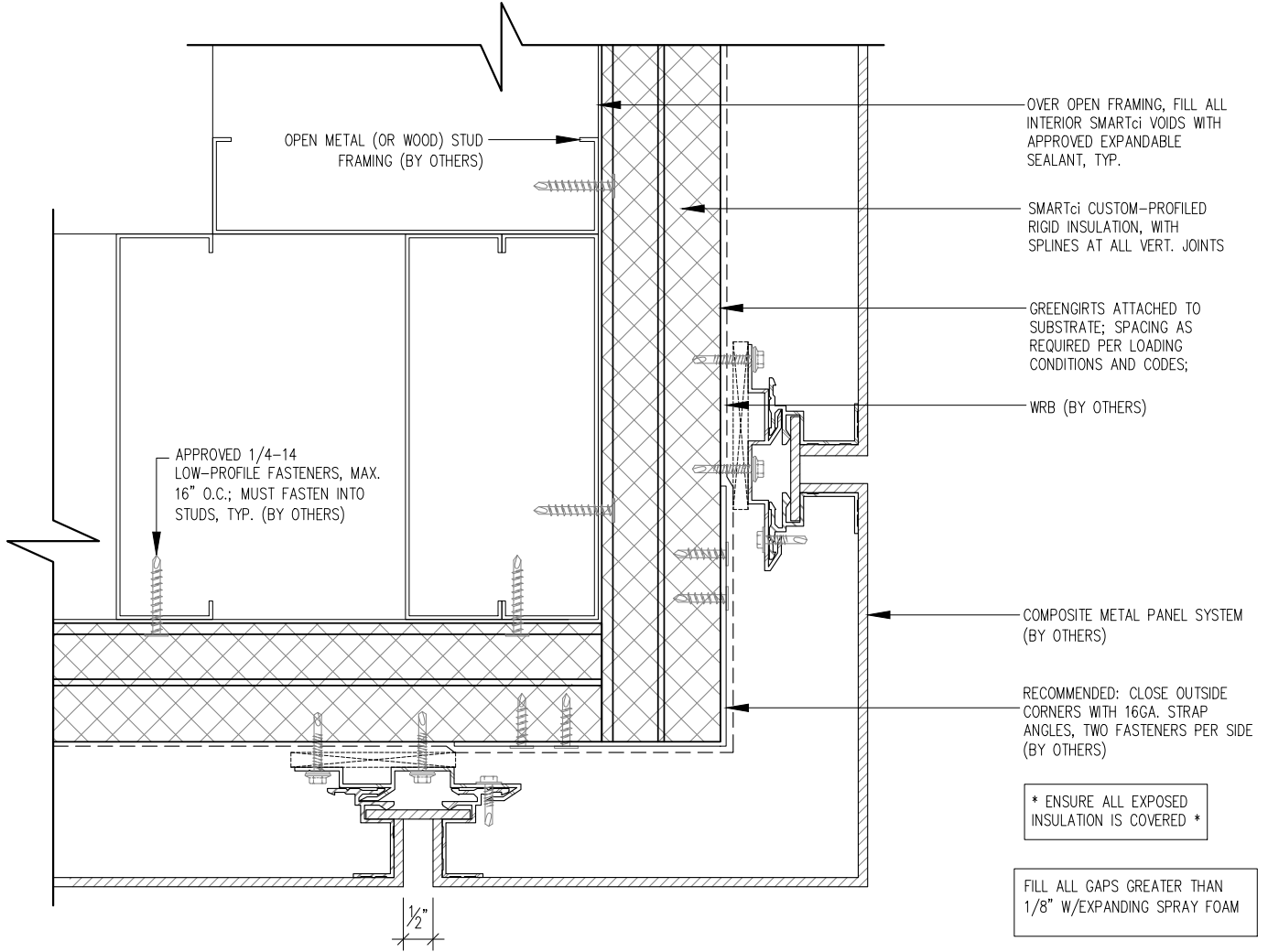
SMARTci™ RIGID INSULATION PANEL

DATE: 05-22-2018

GIRT ORIENTATION: HORIZONTAL

# INSIDE CORNER DETAIL

NOT TO SCALE



NOTE! GREENGIRTS AND CUSTOM-PROFILED RIGID INSULATION PANELS ARE PROVIDED FOR THIS PROJECT AS THERMALLY-BROKEN, CONTINUOUS INSULATION ONLY. CUSTOMER TO PROVIDE AND INSTALL CONTINUOUS AIR/WATER AND WEATHER BARRIER SYSTEM PER SPECIFICATIONS AND MANUFACTURER'S DIRECTIONS. CONSULT SMACA AND ABAA FOR PROPER USE OF SEALANT. THIS INSTALLATION MAKES NO CLAIMS OR GUARANTEES ABOUT WEATHER TIGHTNESS, RESISTANCE OR PROTECTION.



SMARTci System

www.greengirt.com

1 (269) 355-1818

SUBSTRATE: OPEN FRAMING

CLADDING: -ACM PANEL

SIMPLE-Z SIZE: 200

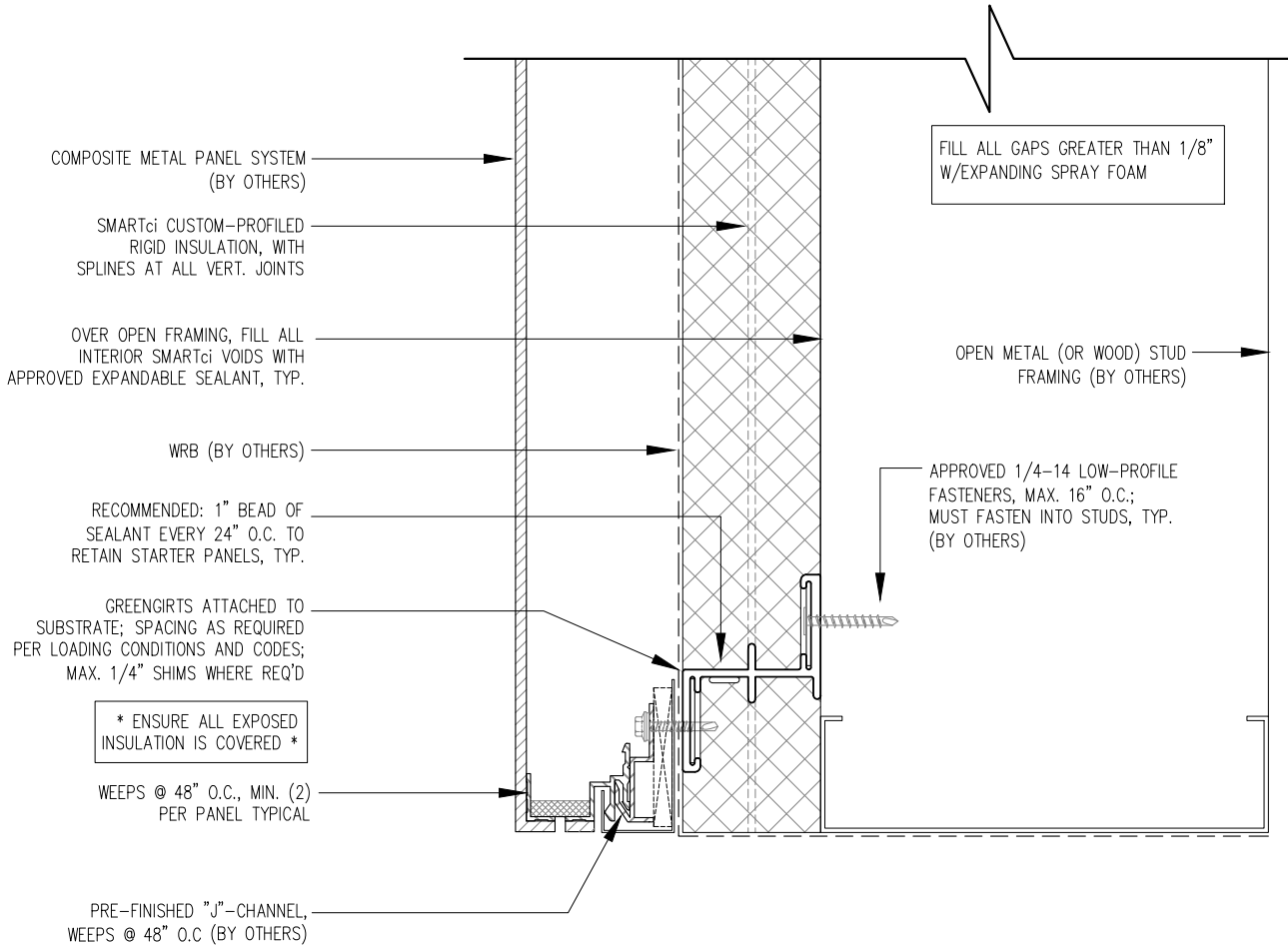
SMARTci™ RIGID INSULATION PANEL

DATE: 05-22-2018

GIRT ORIENTATION: HORIZONTAL

# OUTSIDE CORNER DETAIL

NOT TO SCALE



NOTE! GREENGIRTS AND CUSTOM-PROFILED RIGID INSULATION PANELS ARE PROVIDED FOR THIS PROJECT AS THERMALLY-BROKEN, CONTINUOUS INSULATION ONLY. CUSTOMER TO PROVIDE AND INSTALL CONTINUOUS AIR/WATER AND WEATHER BARRIER SYSTEM PER SPECIFICATIONS AND MANUFACTURER'S DIRECTIONS. CONSULT SMACA AND ABAA FOR PROPER USE OF SEALANT. THIS INSTALLATION MAKES NO CLAIMS OR GUARANTEES ABOUT WEATHER TIGHTNESS, RESISTANCE OR PROTECTION.



**SMARTci System**

[www.greengirt.com](http://www.greengirt.com)

1 (269) 355-1818

SUBSTRATE: OPEN FRAMING

CLADDING: -ACM PANEL

SIMPLE-Z SIZE: 200

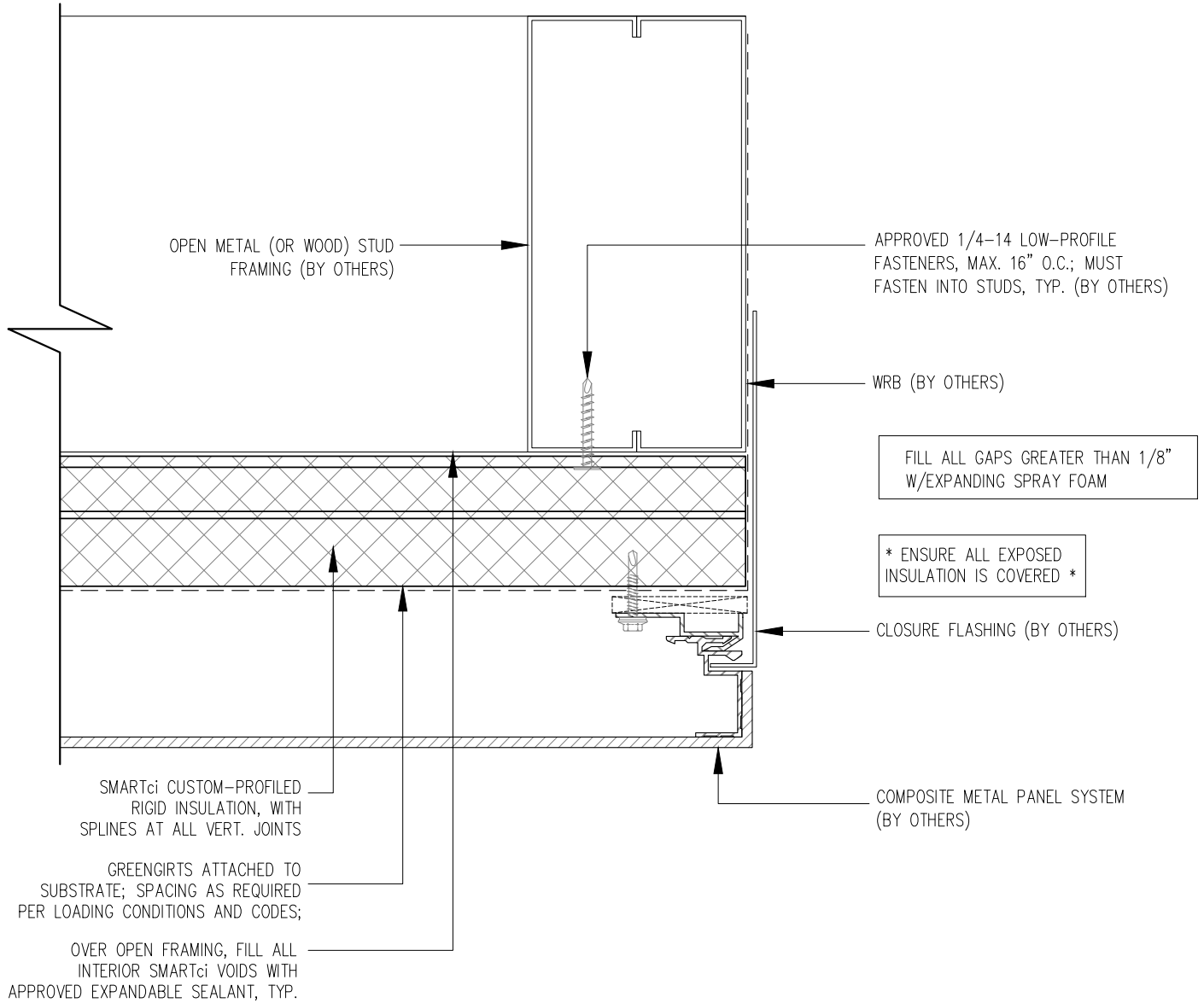
SMARTci™ RIGID INSULATION PANEL

DATE: 05-22-2018

GIRT ORIENTATION: HORIZONTAL

# HEADER DETAIL

NOT TO SCALE



NOTE! GREENGIRTS AND CUSTOM-PROFILED RIGID INSULATION PANELS ARE PROVIDED FOR THIS PROJECT AS THERMALLY-BROKEN, CONTINUOUS INSULATION ONLY. CUSTOMER TO PROVIDE AND INSTALL CONTINUOUS AIR/WATER AND WEATHER BARRIER SYSTEM PER SPECIFICATIONS AND MANUFACTURER'S DIRECTIONS. CONSULT SMACA AND ABAA FOR PROPER USE OF SEALANT. THIS INSTALLATION MAKES NO CLAIMS OR GUARANTEES ABOUT WEATHER TIGHTNESS, RESISTANCE OR PROTECTION.



SMARTci System

www.greengirt.com

1 (269) 355-1818

SUBSTRATE: OPEN FRAMING

CLADDING: -ACM PANEL

SIMPLE-Z SIZE: 200

SMARTci™ RIGID INSULATION PANEL

DATE: 05-22-2018

GIRT ORIENTATION: HORIZONTAL

# JAMB DETAIL

NOT TO SCALE





CUSTOM FIELD-CUT SMARTci RIGID INSULATION PANEL

\* ENSURE ALL EXPOSED INSULATION IS COVERED \*

RECOMMENDED: 1/4" x 1" BEAD OF SEALANT TO RETAIN STARTER PANELS @ 4' O.C., TYP.

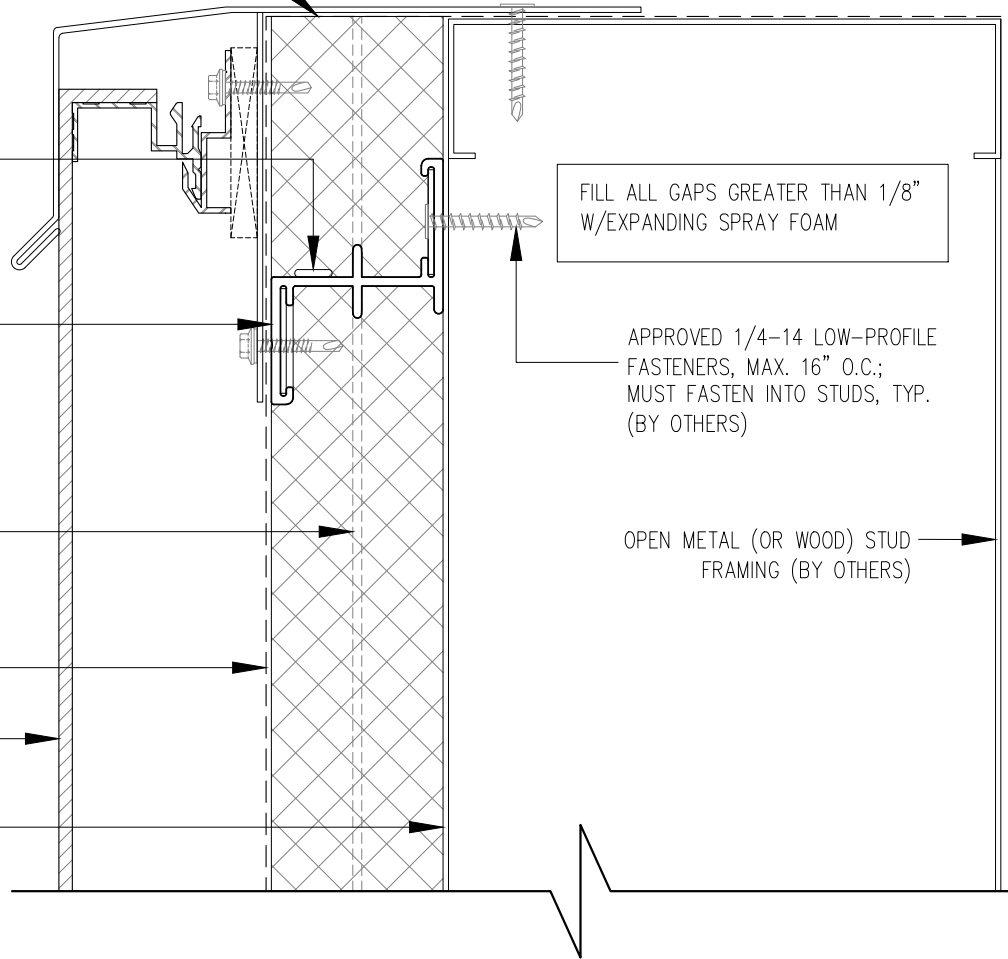
GREENGIRTS ATTACHED TO SUBSTRATE; SPACING AS REQUIRED PER LOADING CONDITIONS AND CODES;

SMARTci CUSTOM-PROFILED RIGID INSULATION, WITH SPLINES AT ALL VERT. JOINTS

WRB (BY OTHERS)

COMPOSITE METAL PANEL SYSTEM (BY OTHERS)

OVER OPEN FRAMING, FILL ALL INTERIOR SMARTci VOIDS WITH APPROVED EXPANDABLE SEALANT, TYP.



FILL ALL GAPS GREATER THAN 1/8" W/EXPANDING SPRAY FOAM

APPROVED 1/4-14 LOW-PROFILE FASTENERS, MAX. 16" O.C.; MUST FASTEN INTO STUDS, TYP. (BY OTHERS)

OPEN METAL (OR WOOD) STUD FRAMING (BY OTHERS)

NOTE! GREENGIRTS AND CUSTOM-PROFILED RIGID INSULATION PANELS ARE PROVIDED FOR THIS PROJECT AS THERMALLY-BROKEN, CONTINUOUS INSULATION ONLY. CUSTOMER TO PROVIDE AND INSTALL CONTINUOUS AIR/WATER AND WEATHER BARRIER SYSTEM PER SPECIFICATIONS AND MANUFACTURER'S DIRECTIONS. CONSULT SMACA AND ABAA FOR PROPER USE OF SEALANT. THIS INSTALLATION MAKES NO CLAIMS OR GUARANTEES ABOUT WEATHER TIGHTNESS, RESISTANCE OR PROTECTION.



SMARTci System

www.greengirt.com

1 (269) 355-1818

SUBSTRATE: OPEN FRAMING

CLADDING: -ACM PANEL

SIMPLE-Z SIZE: 200

SMARTci™ RIGID INSULATION PANEL

DATE: 05-22-2018

GIRT ORIENTATION: HORIZONTAL

# SILL DETAIL

NOT TO SCALE