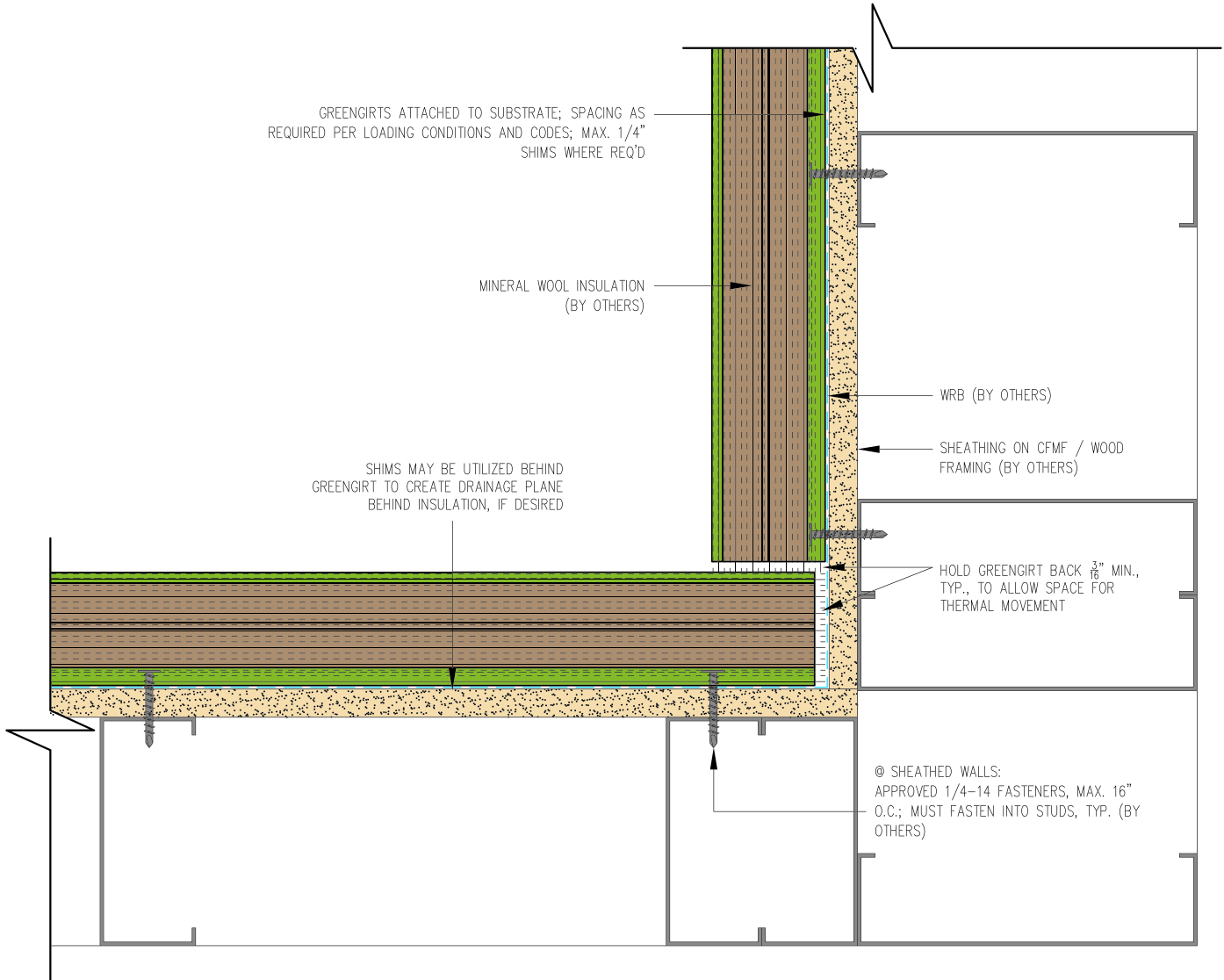




ADVANCED
ARCHITECTURAL
PRODUCTS

NOTE: DETAILS ARE PROVIDED FOR INFORMATION ONLY, AND ARE SUBJECT TO CHANGE WITHOUT NOTICE. SPECIFIC PROJECT ENGINEERING BY OTHERS WILL ADDRESS ATTACHMENT SPACING, ORIENTATION AND LOADING. CONTACT ADVANCED ARCHITECTURAL PRODUCTS FOR FURTHER DETAILS, AND TO INQUIRE ABOUT UPDATES AND REVISIONS.



GreenGirt.com

(269) 355-1818

SUBSTRATE: STUD W/ SHEATHING

CLADDING: -

GREENGIRT SIZE: 200 / 2"

INSULATION: MINERAL WOOL

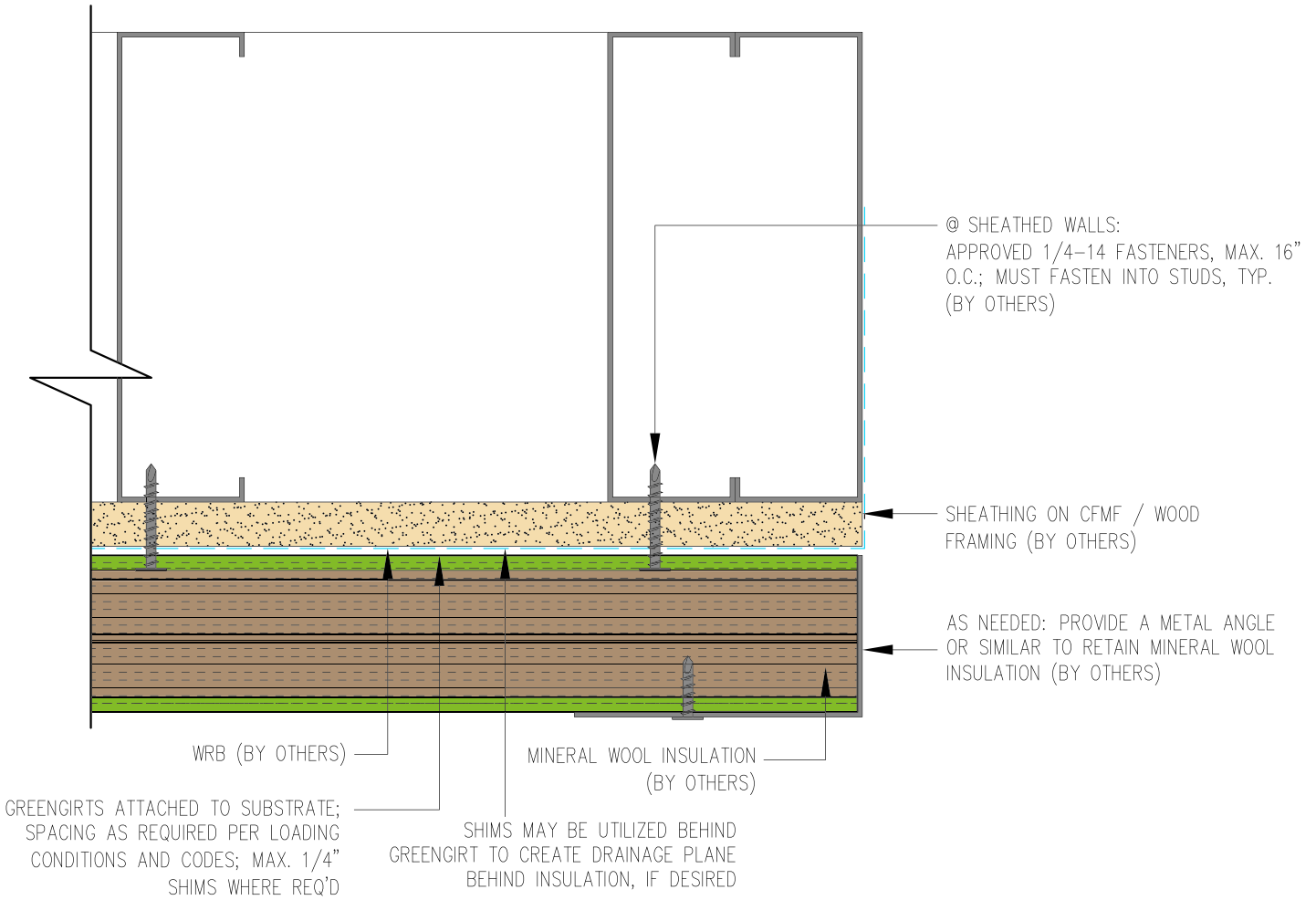
DATE:

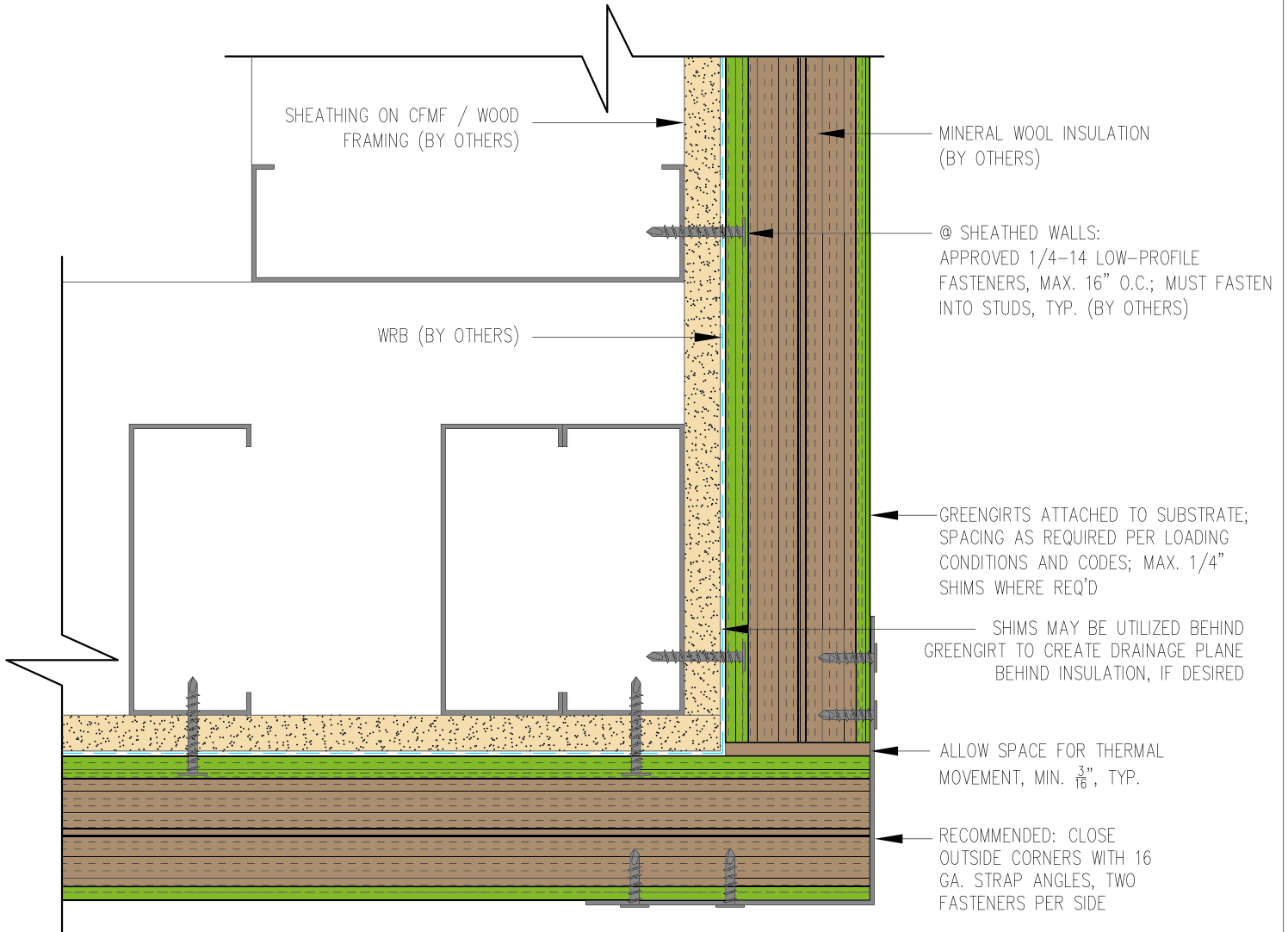
GIRT ORIENTATION: HORIZONTAL

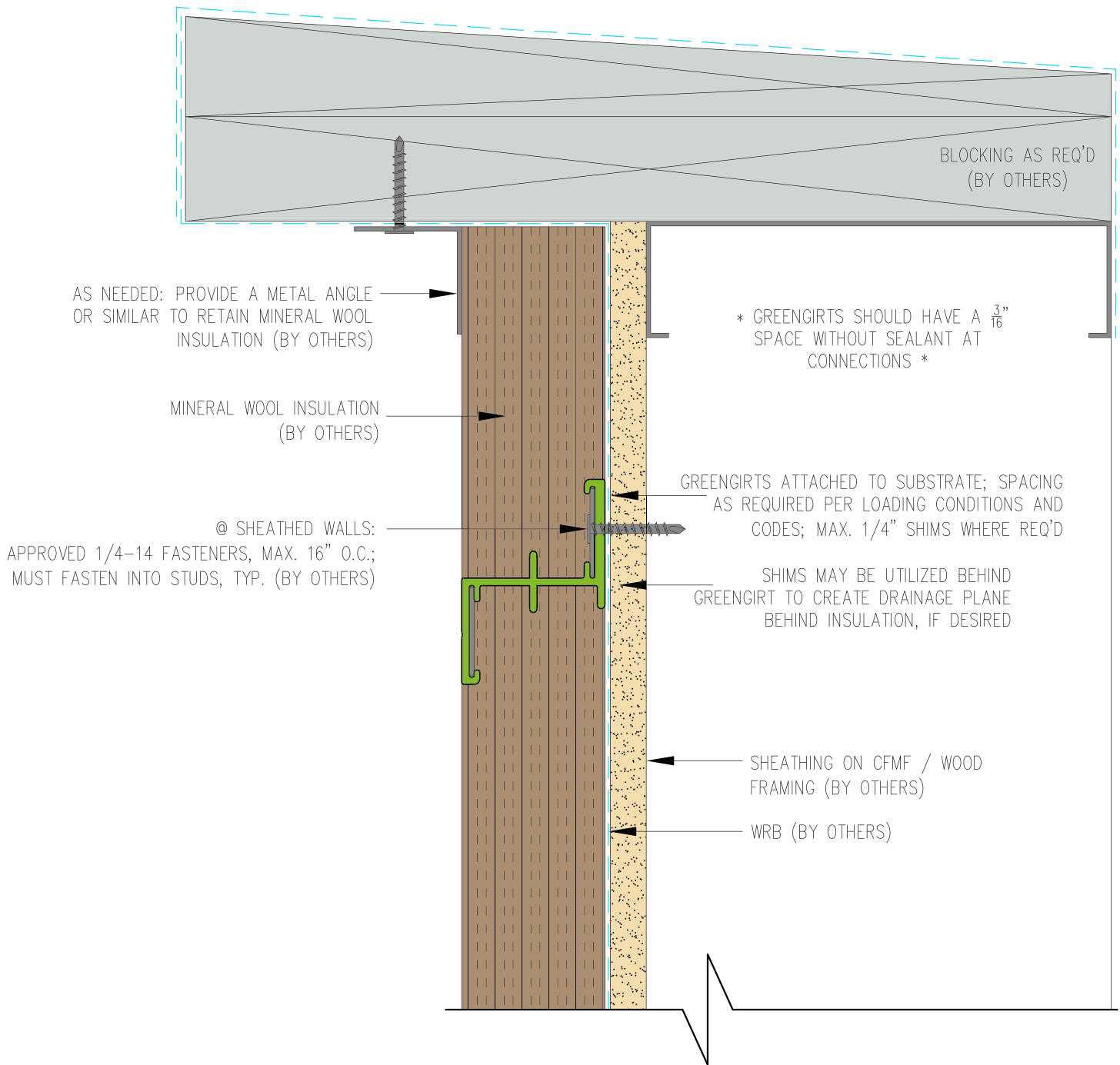
INSIDE CORNER DETAIL

NOT TO SCALE

GG5









ADVANCED
ARCHITECTURAL
PRODUCTS

NOTE: DETAILS ARE PROVIDED FOR INFORMATION ONLY, AND ARE SUBJECT TO CHANGE WITHOUT NOTICE. SPECIFIC PROJECT ENGINEERING BY OTHERS WILL ADDRESS ATTACHMENT SPACING, ORIENTATION AND LOADING. CONTACT ADVANCED ARCHITECTURAL PRODUCTS FOR FURTHER DETAILS, AND TO INQUIRE ABOUT UPDATES AND REVISIONS.

AS NEEDED: PROVIDE A METAL ANGLE
OR SIMILAR TO RETAIN MINERAL WOOL
INSULATION (BY OTHERS)

SHIMS MAY BE UTILIZED BEHIND
GREENGIRT TO CREATE DRAINAGE PLANE
BEHIND INSULATION, IF DESIRED

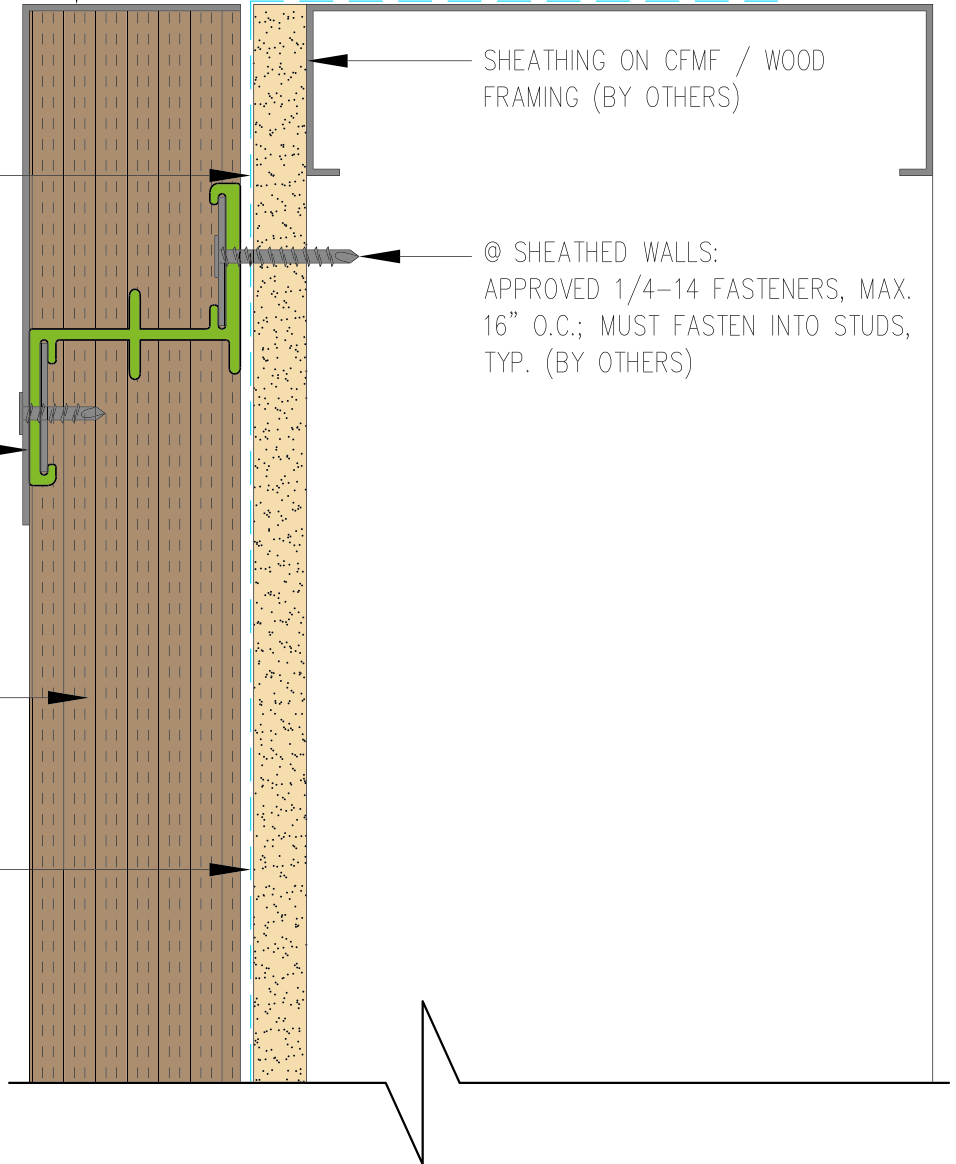
GREENGIRTS ATTACHED TO
SUBSTRATE; SPACING AS REQUIRED
PER LOADING CONDITIONS AND CODES;
MAX. 1/4" SHIMS WHERE REQ'D

MINERAL WOOL INSULATION
(BY OTHERS)

WRB (BY OTHERS)

SHEATHING ON CFMF / WOOD
FRAMING (BY OTHERS)

@ SHEATHED WALLS:
APPROVED 1/4-14 FASTENERS, MAX.
16" O.C.; MUST FASTEN INTO STUDS,
TYP. (BY OTHERS)



GreenGirt.com

(269) 355-1818

SUBSTRATE: STUD W/ SHEATHING

CLADDING: -

GREENGIRT SIZE: 200 / 2"

INSULATION: MINERAL WOOL

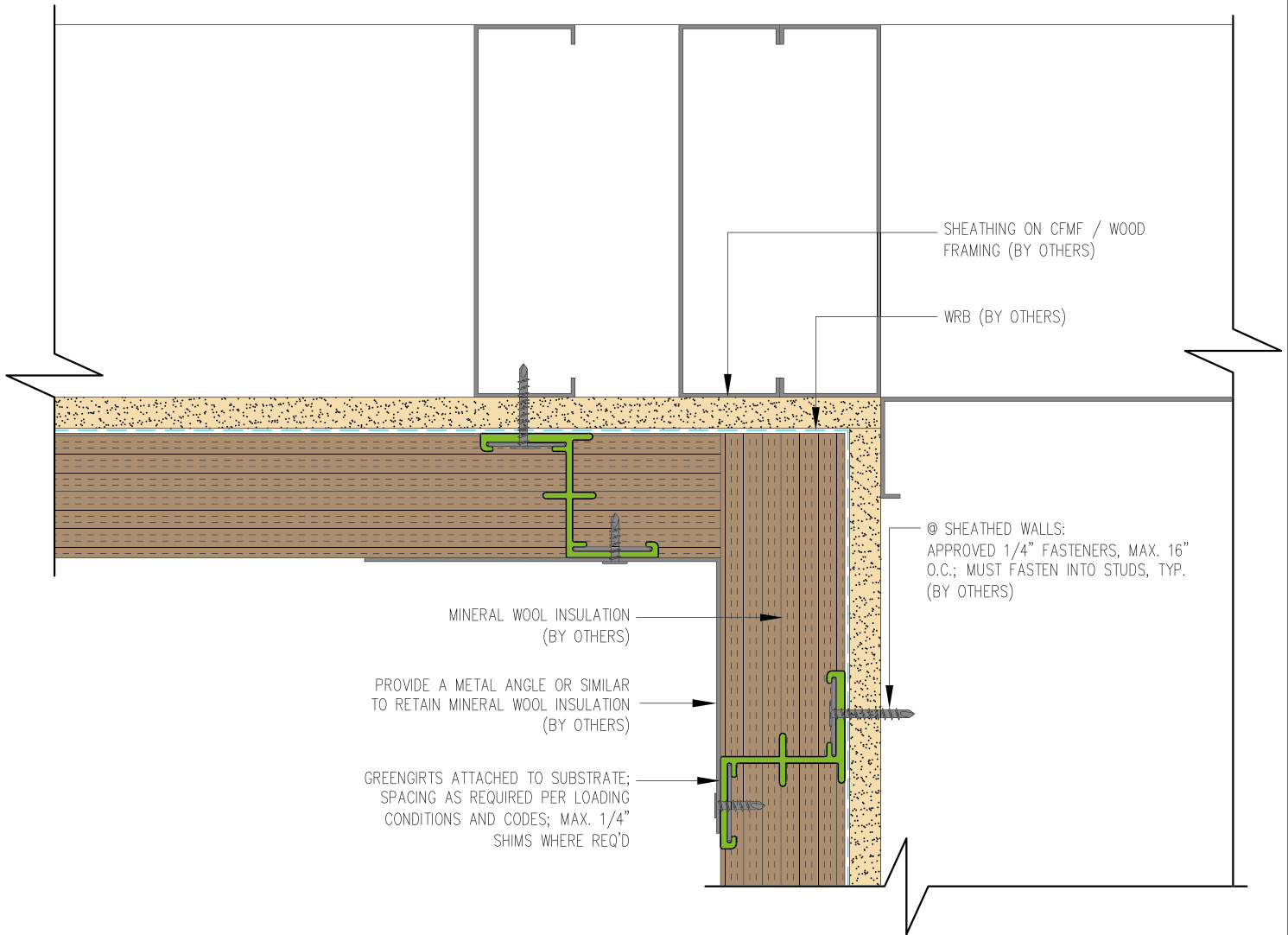
DATE:

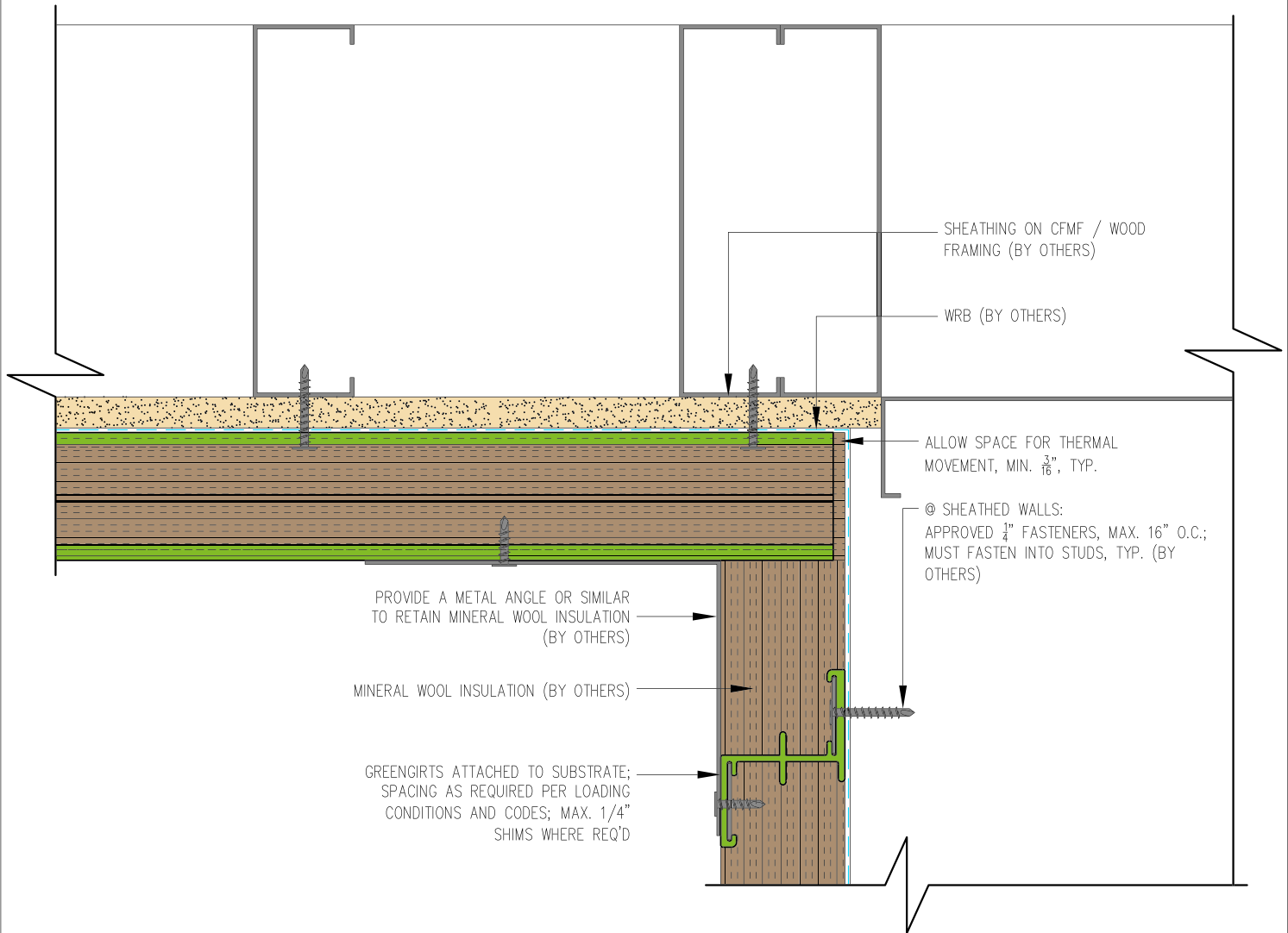
GIRT ORIENTATION: HORIZONTAL

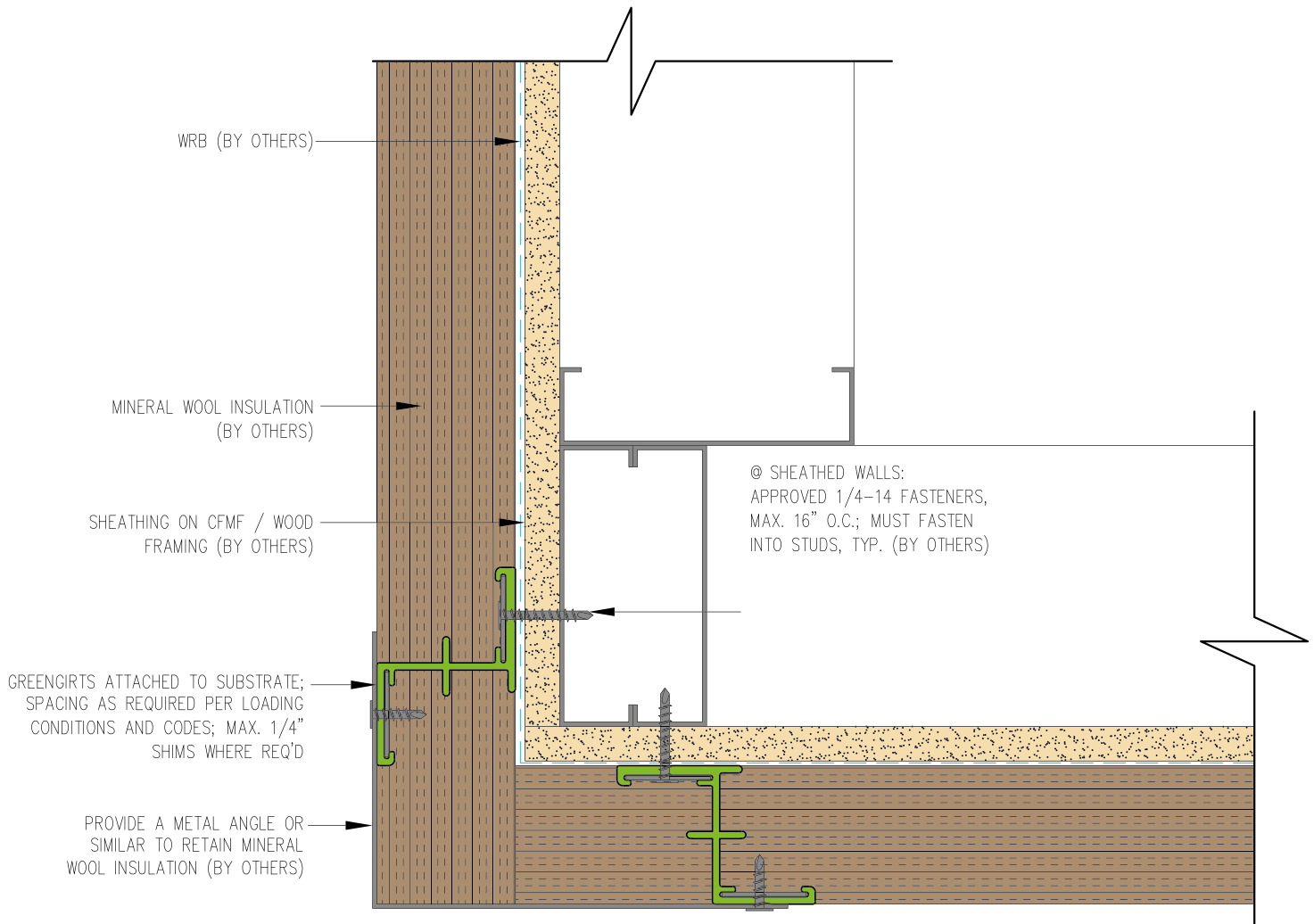
SILL DETAIL

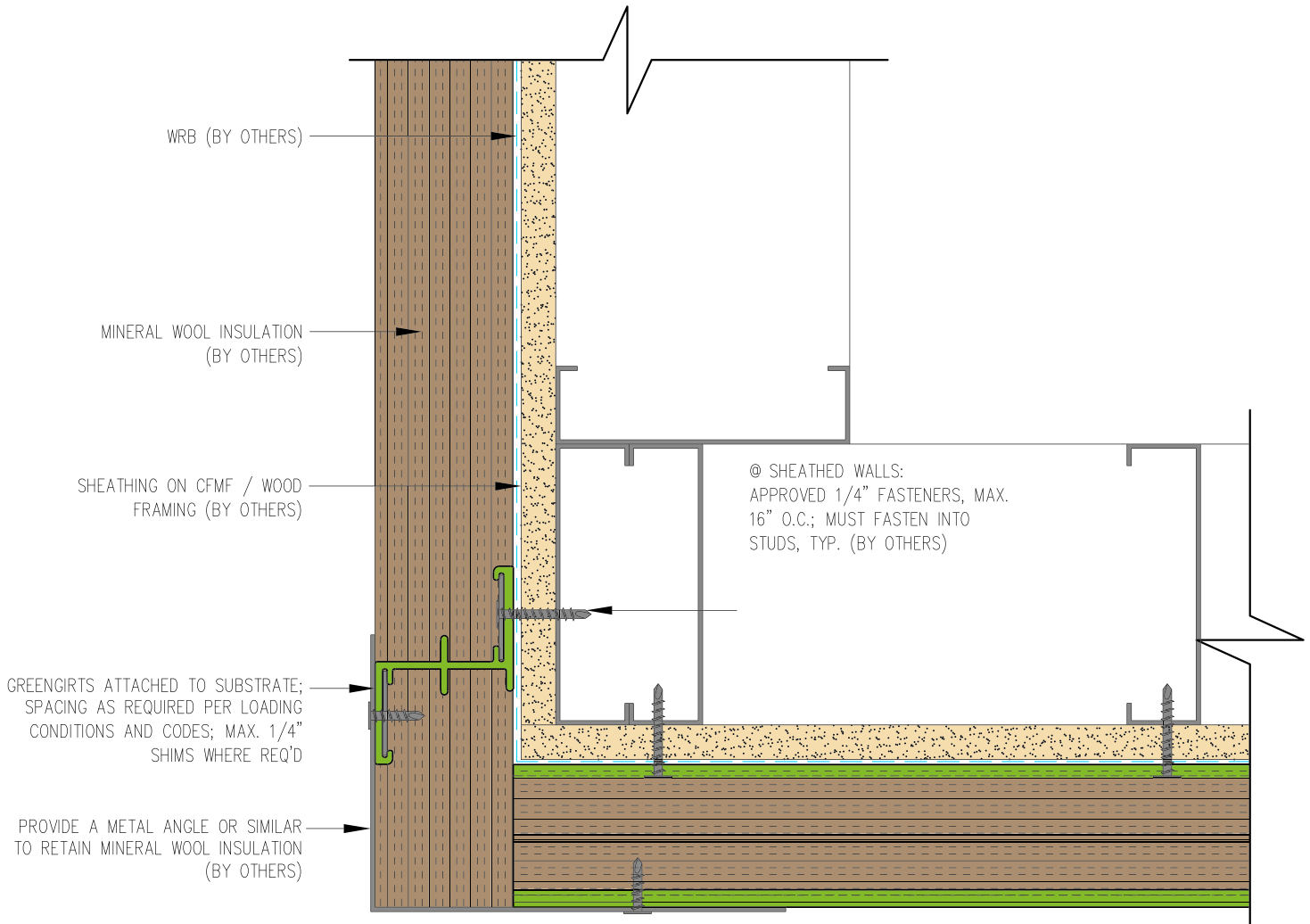
NOT TO SCALE

GG9





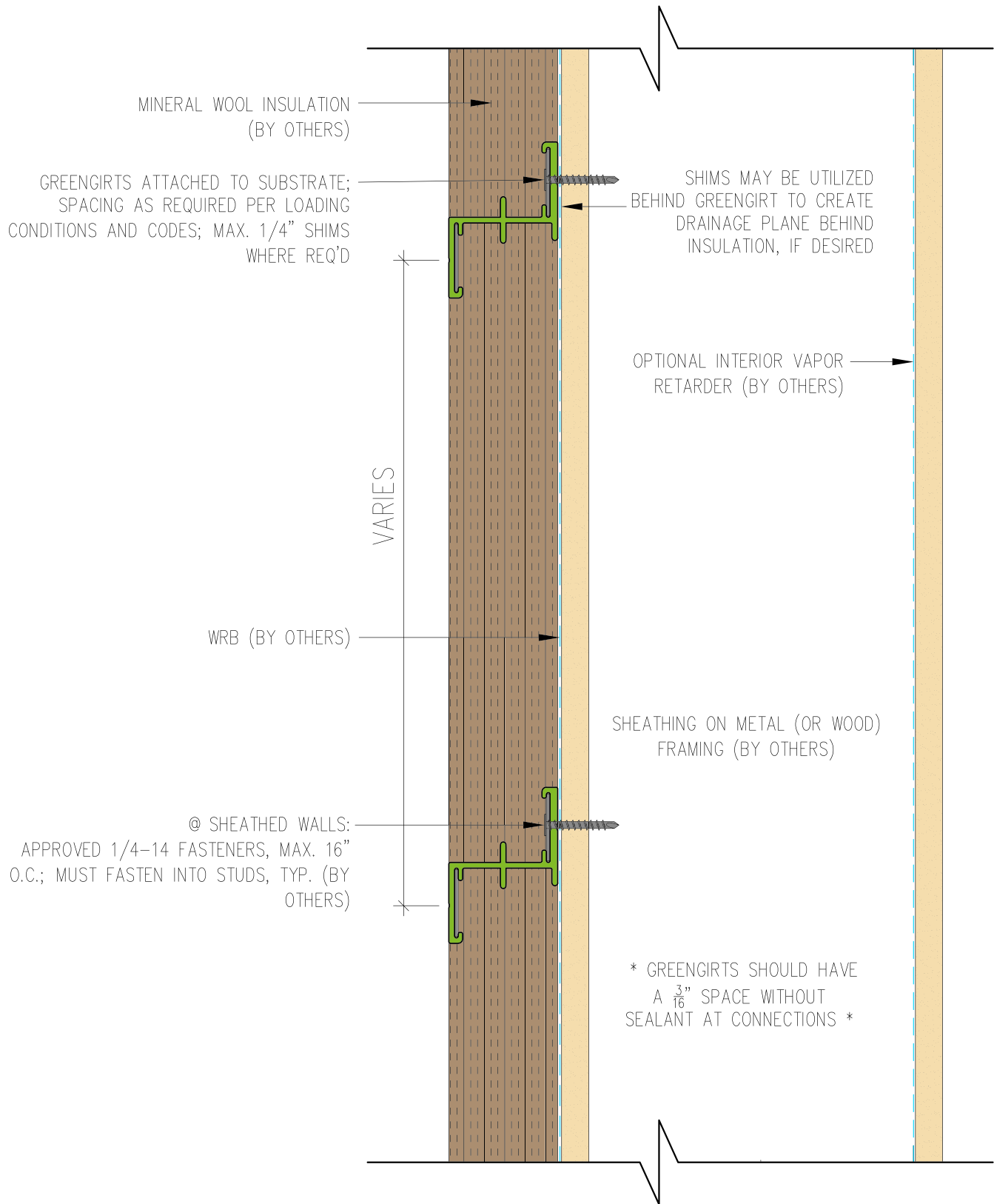






ADVANCED
ARCHITECTURAL
PRODUCTS

NOTE: DETAILS ARE PROVIDED FOR INFORMATION ONLY, AND ARE SUBJECT TO CHANGE WITHOUT NOTICE. SPECIFIC PROJECT ENGINEERING BY OTHERS WILL ADDRESS ATTACHMENT SPACING, ORIENTATION AND LOADING. CONTACT ADVANCED ARCHITECTURAL PRODUCTS FOR FURTHER DETAILS, AND TO INQUIRE ABOUT UPDATES AND REVISIONS.



GreenGirt.com

(269) 355-1818

SUBSTRATE: STUD W/ SHEATHING

INSULATION: MINERAL WOOL

CLADDING: -

DATE:

GREENGIRT SIZE: 200 / 2"

GIRT ORIENTATION: HORIZONTAL

WALL SECTION

NOT TO SCALE

GG1