

**SMARTci**™

GreenGirt.com

(269) 355-1818

SUBSTRATE: MASONRY

CLADDING: —

GREENGIRT SIZE: 200 / 2"

INSULATION: MINERAL WOOL

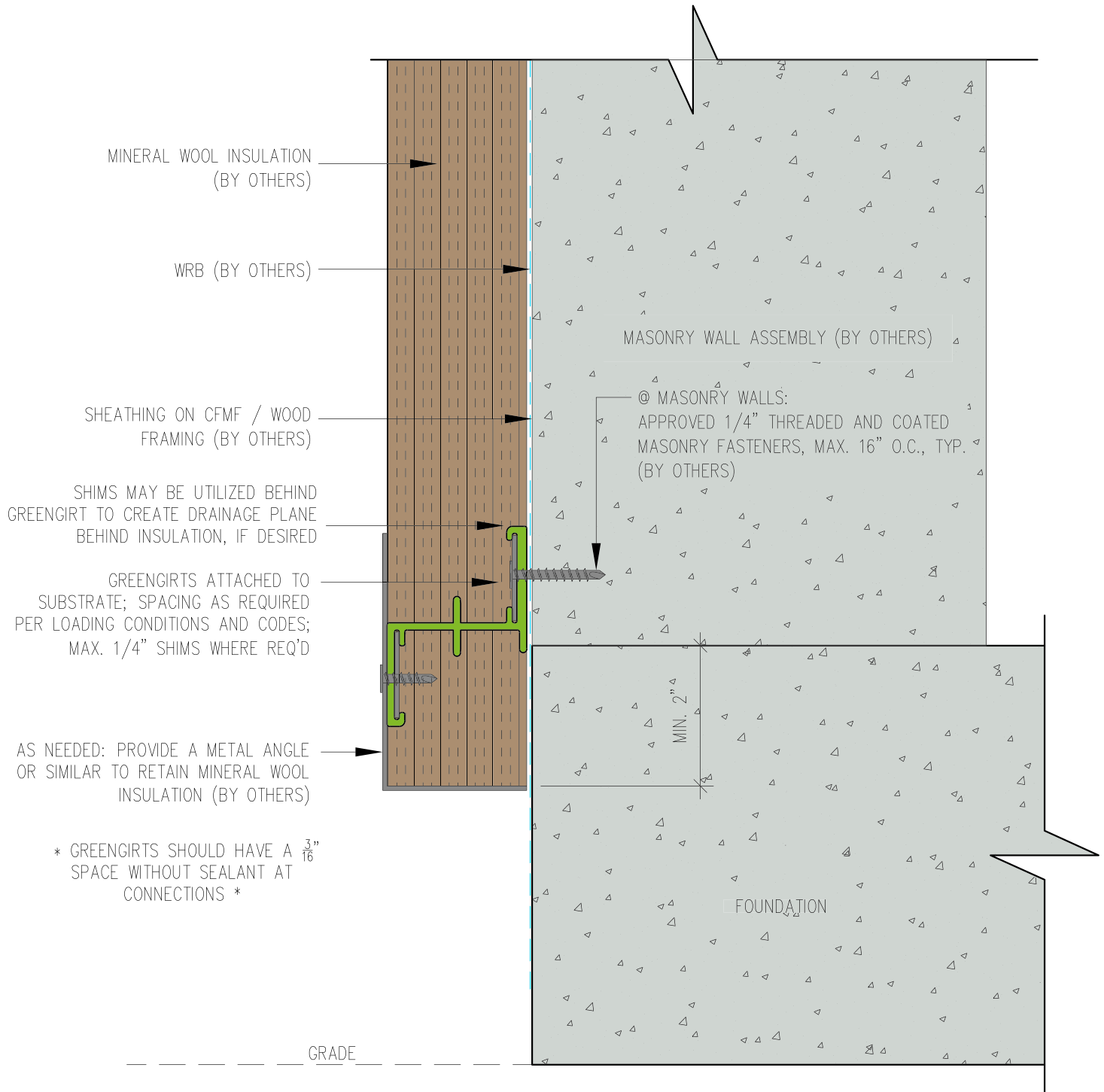
DATE:

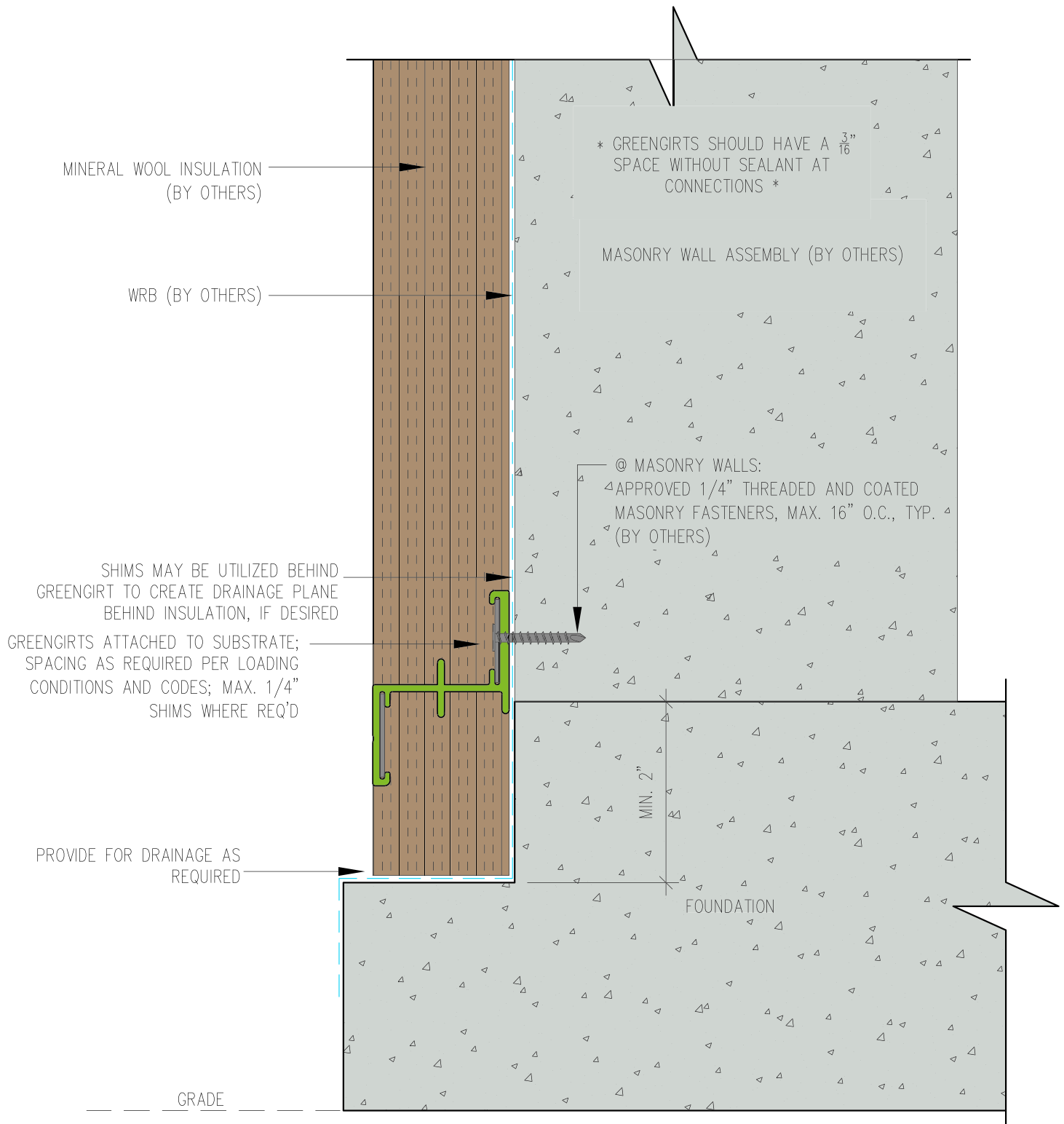
GIRT ORIENTATION: HORIZONTAL

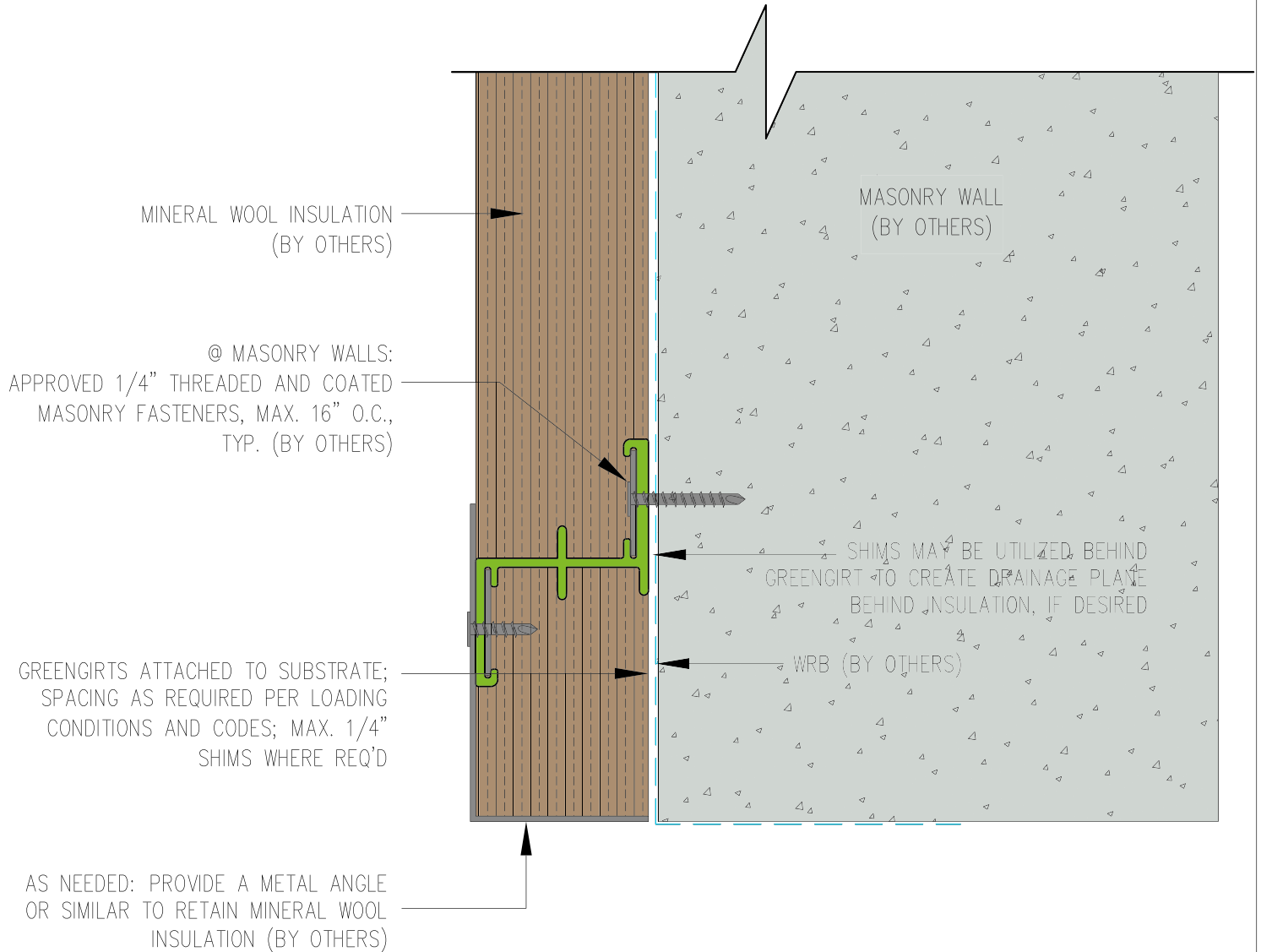
BASE AT ROOF

NOT TO SCALE

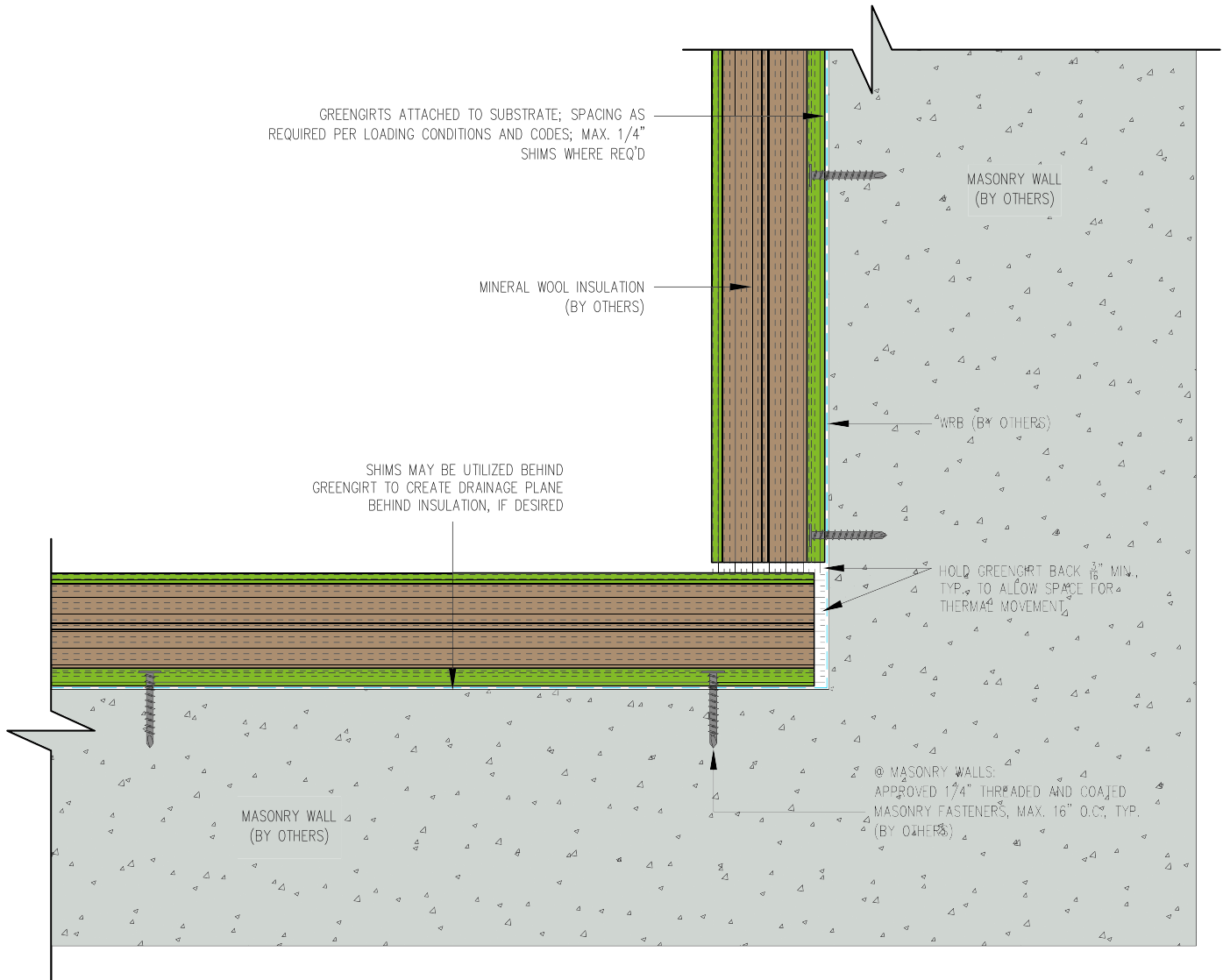
GG10

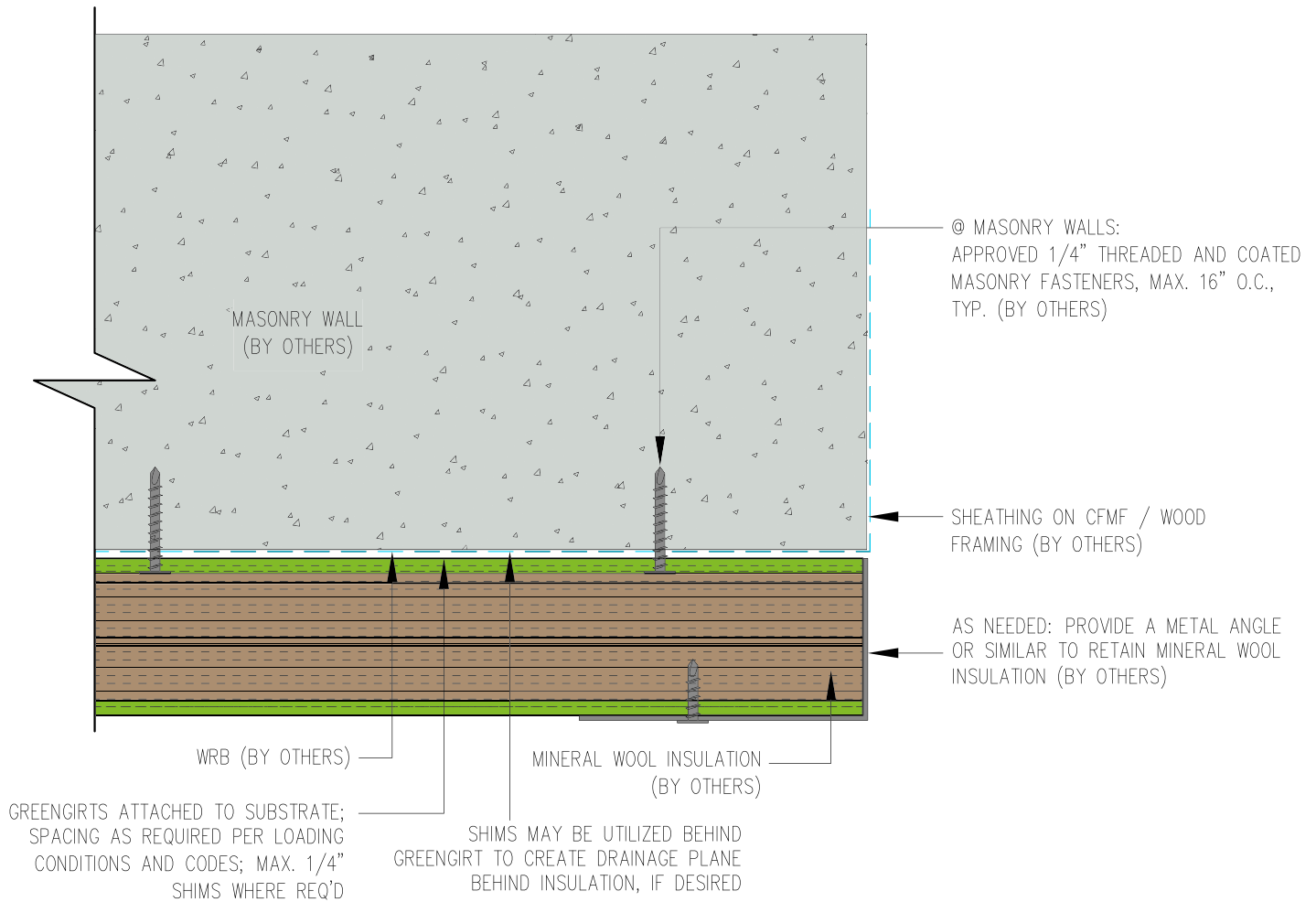


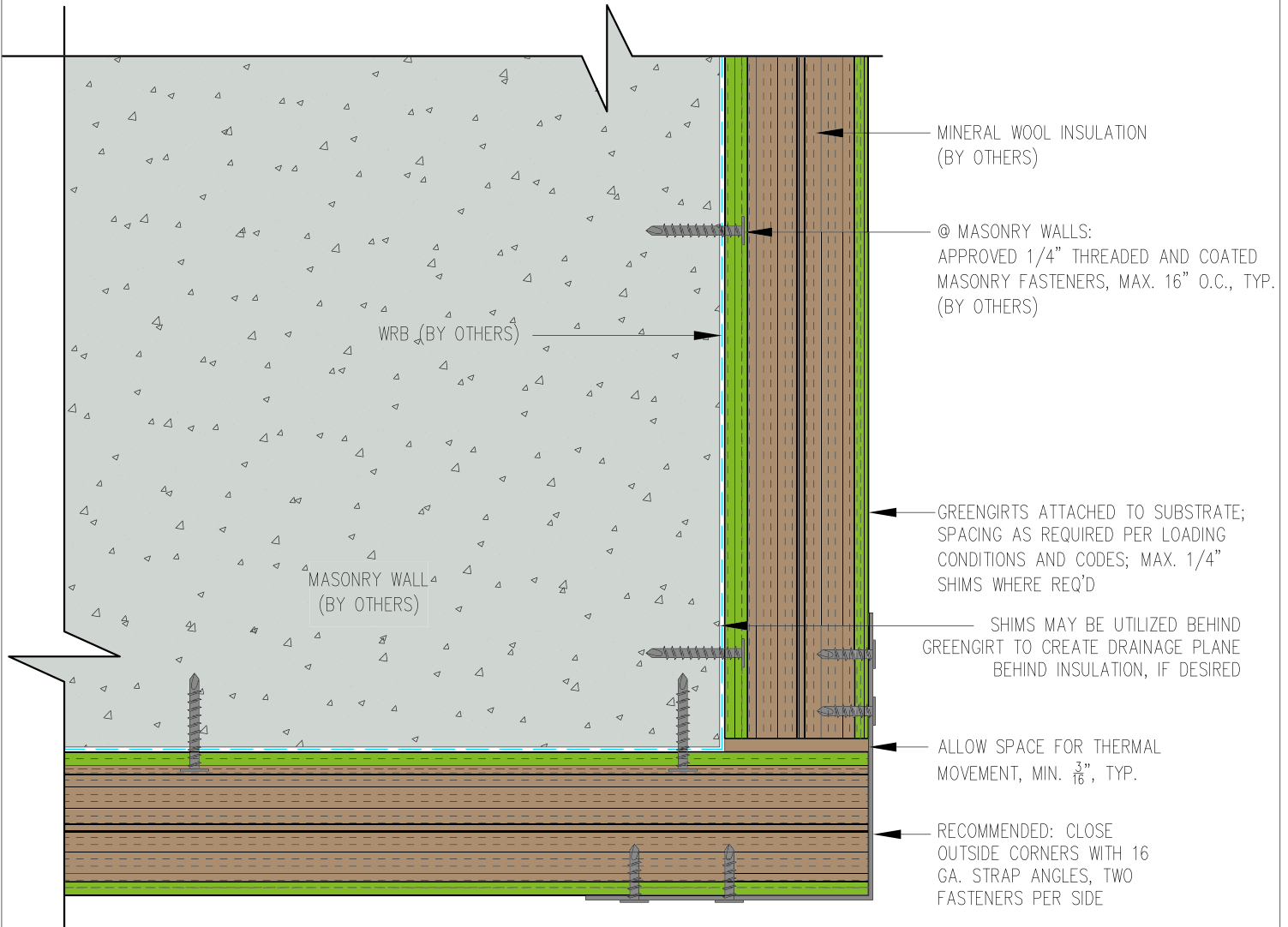


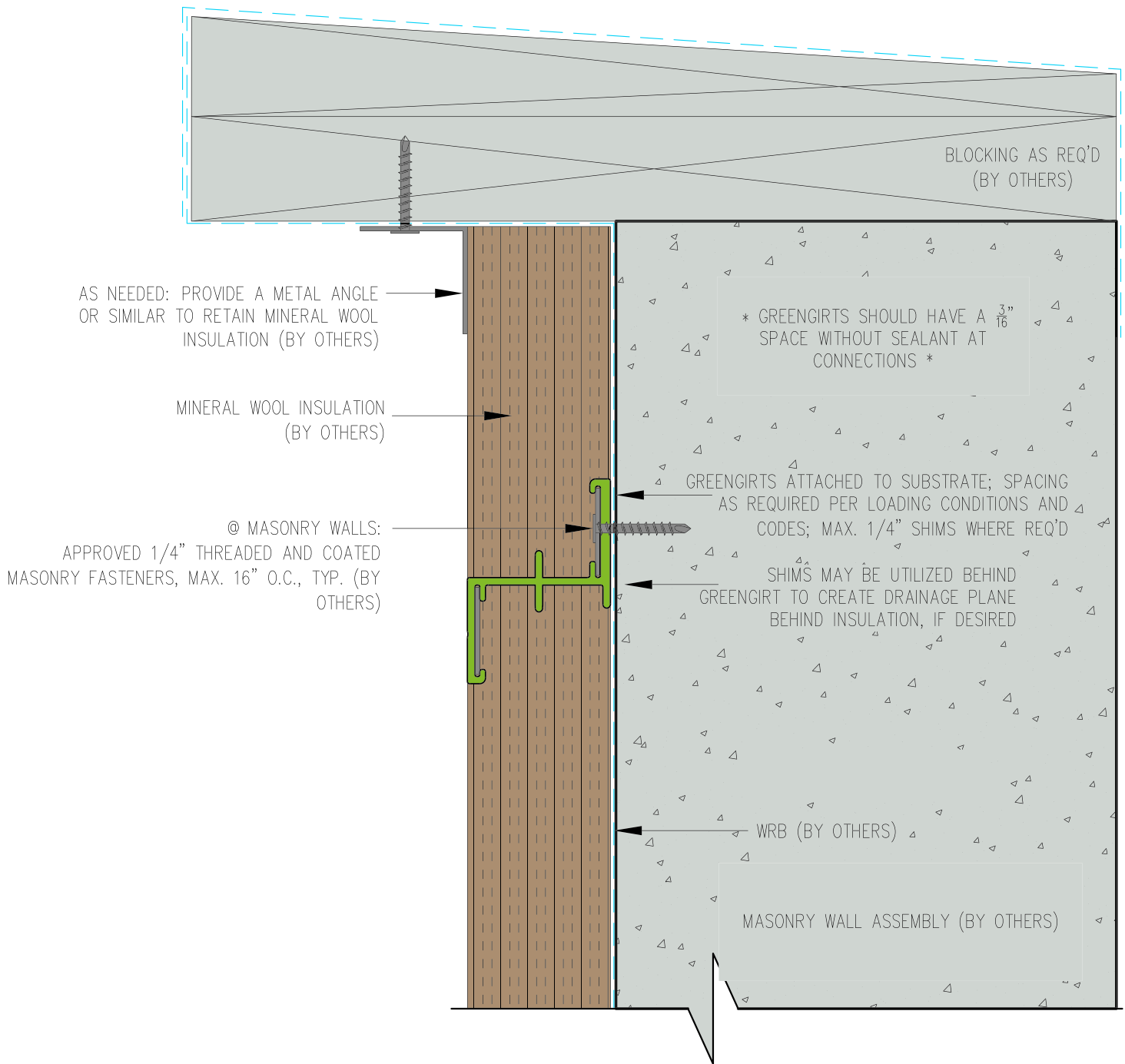












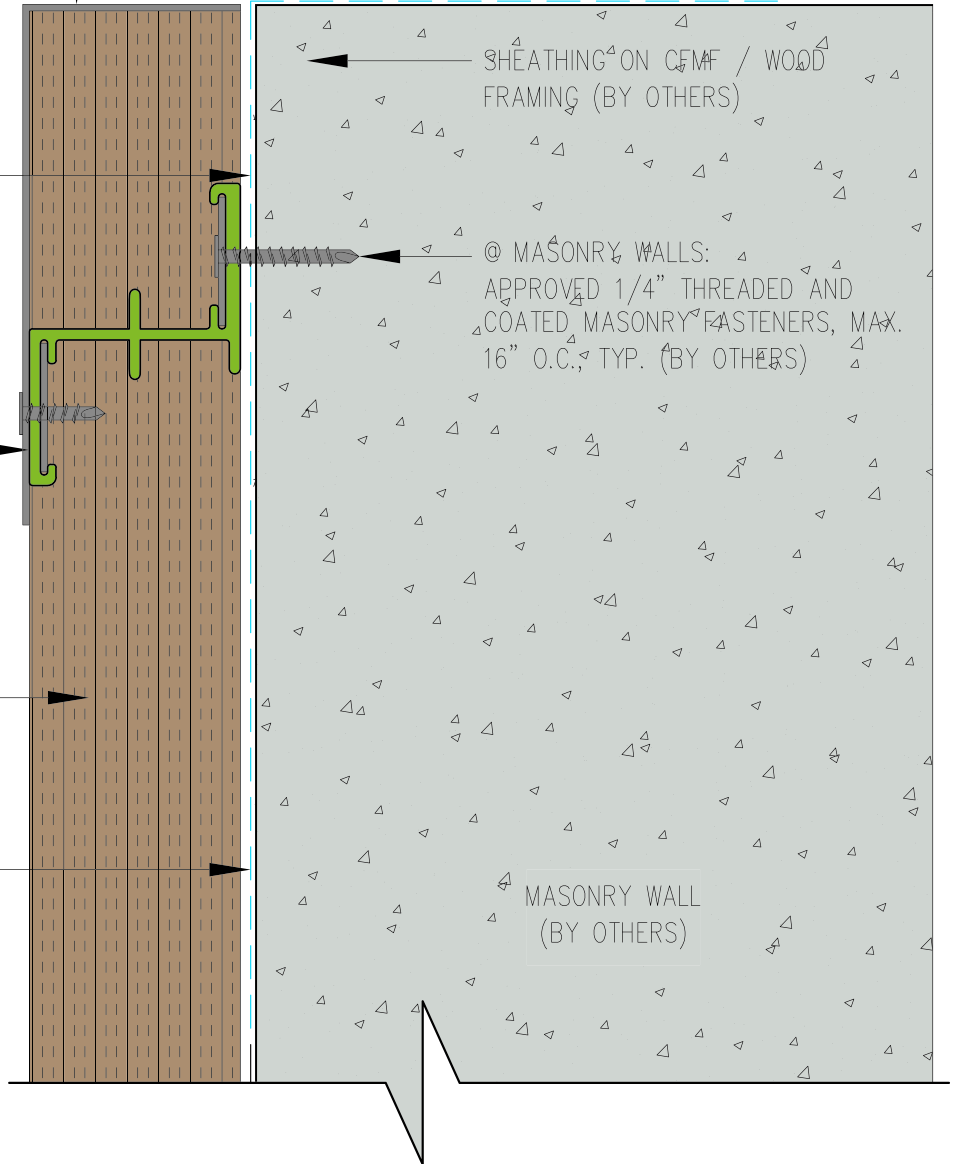
AS NEEDED: PROVIDE A METAL ANGLE OR SIMILAR TO RETAIN MINERAL WOOL INSULATION (BY OTHERS)

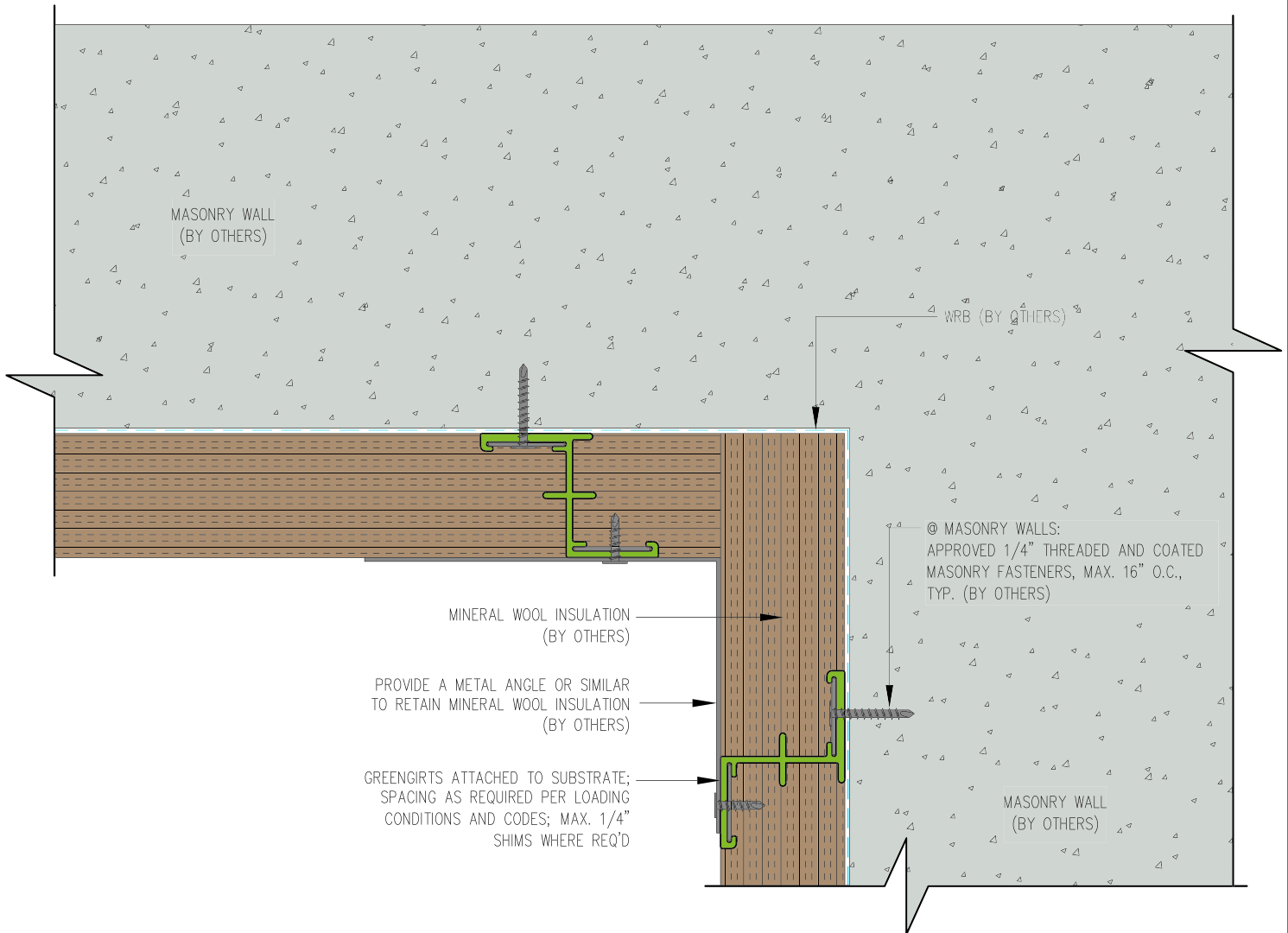
SHIMS MAY BE UTILIZED BEHIND GREENGIRT TO CREATE DRAINAGE PLANE BEHIND INSULATION, IF DESIRED

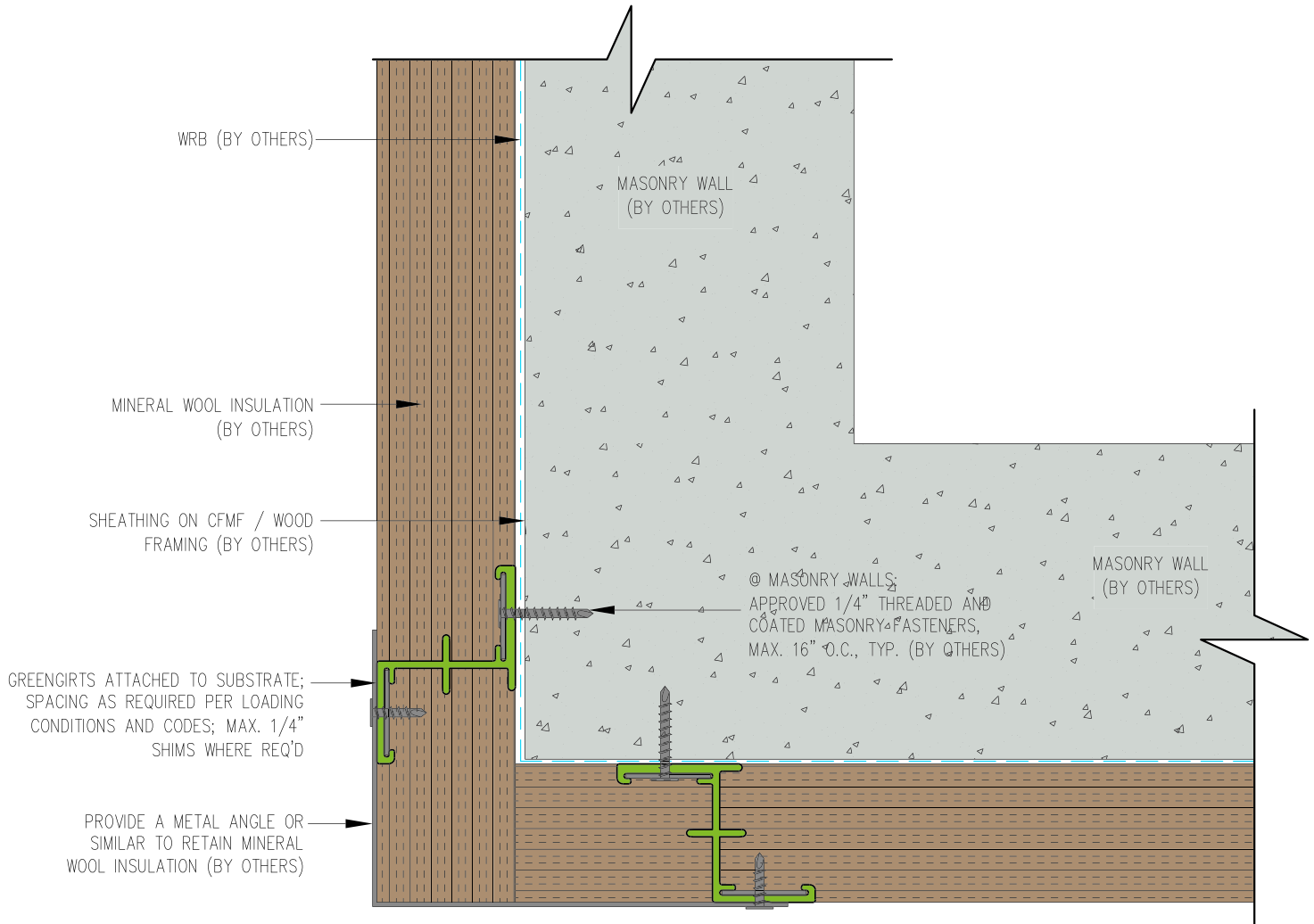
GREENGIRTS ATTACHED TO SUBSTRATE; SPACING AS REQUIRED PER LOADING CONDITIONS AND CODES; MAX. 1/4" SHIMS WHERE REQ'D

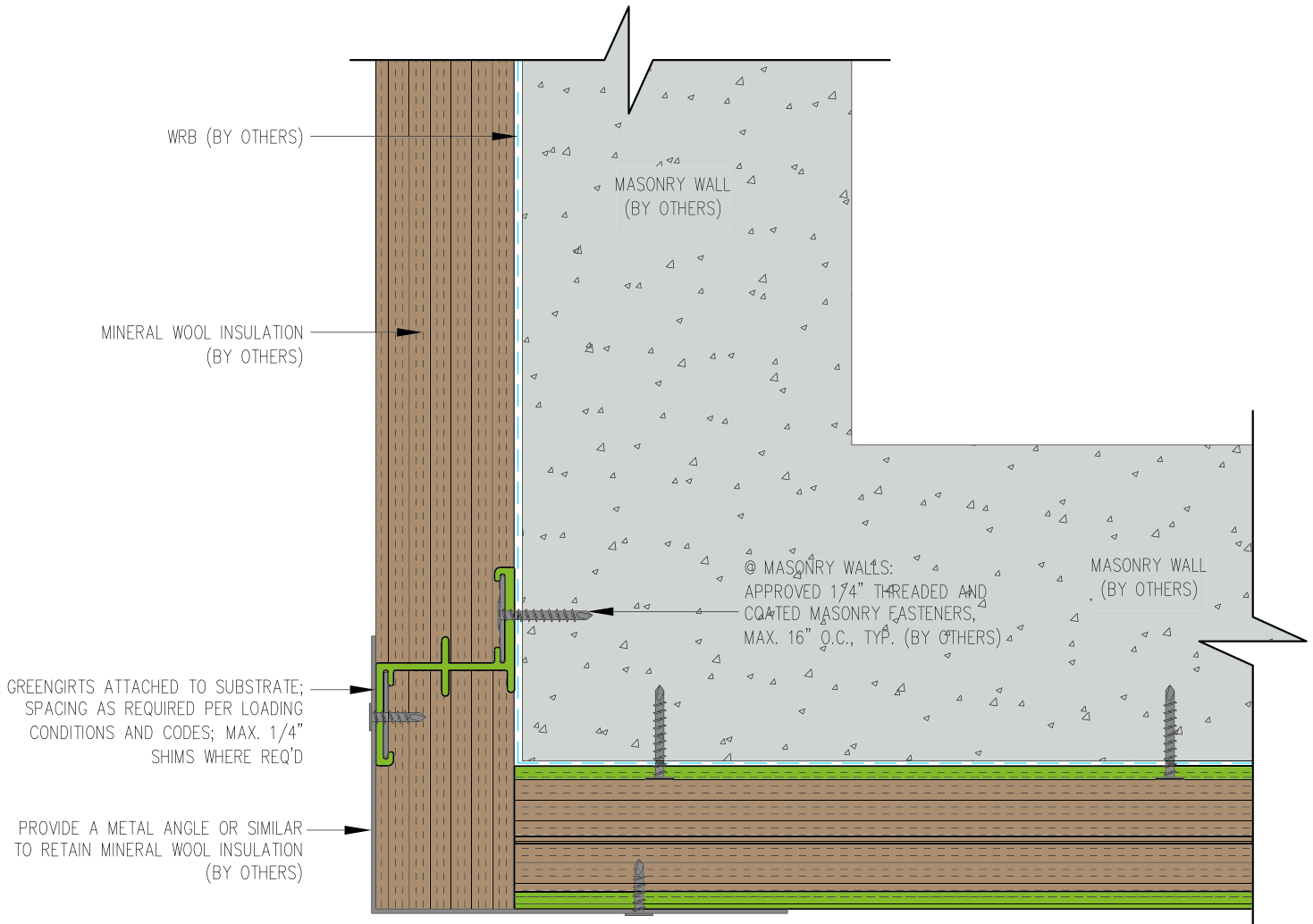
MINERAL WOOL INSULATION (BY OTHERS)

WRB (BY OTHERS)







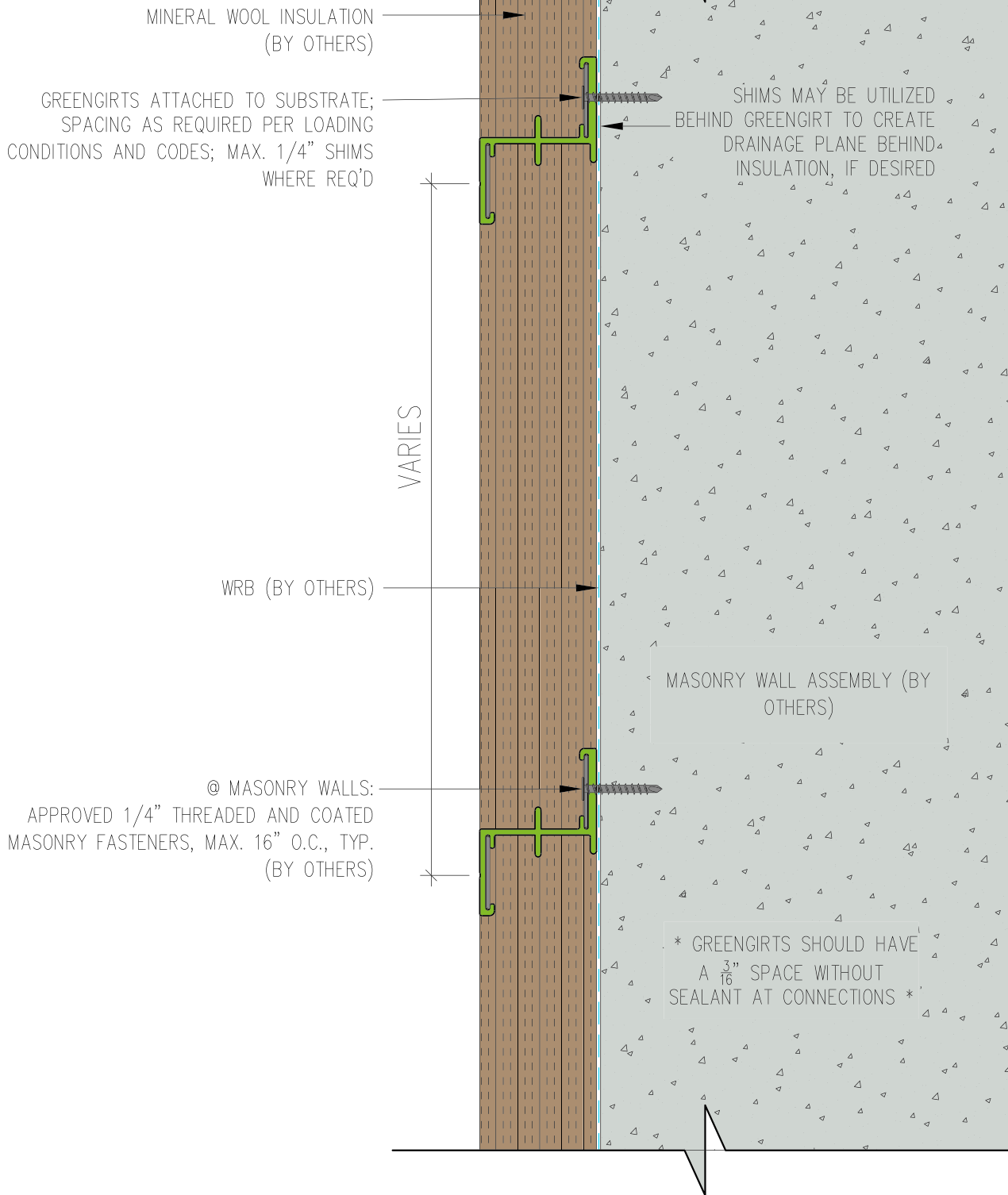






ADVANCED  
ARCHITECTURAL  
PRODUCTS

NOTE: DETAILS ARE PROVIDED FOR INFORMATION ONLY, AND ARE SUBJECT TO CHANGE WITHOUT NOTICE. SPECIFIC PROJECT ENGINEERING BY OTHERS WILL ADDRESS ATTACHMENT SPACING, ORIENTATION AND LOADING. CONTACT ADVANCED ARCHITECTURAL PRODUCTS FOR FURTHER DETAILS, AND TO INQUIRE ABOUT UPDATES AND REVISIONS.



GreenGirt.com

(269) 355-1818

SUBSTRATE: MASONRY

CLADDING: -

GREENGIRT SIZE: 200 / 2"

INSULATION: MINERAL WOOL

DATE:

GIRT ORIENTATION: HORIZONTAL

WALL SECTION

NOT TO SCALE

GG1

