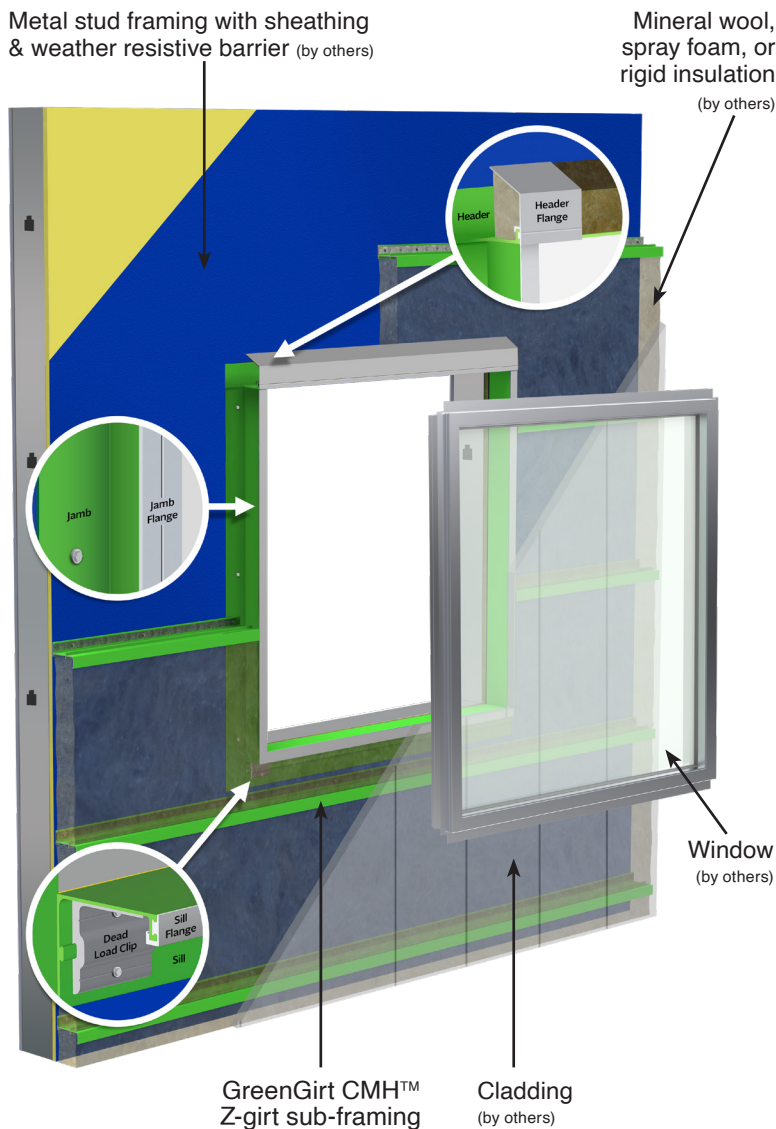


Doubling Thermal Efficiency at Windows

GreenGirt CMH XO™ continuous insulation system for windows

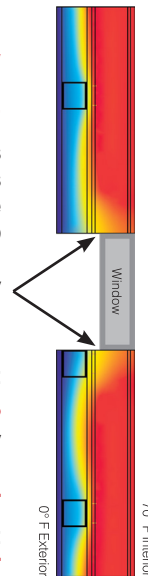
The GreenGirt CMH XO system offers an advanced continuous insulation solution for windows, effectively tackling the critical challenge of thermal loss at building openings. By eliminating through-wall metal, through-insulation fasteners, conductive metal angles, and inefficient wood-blocking, and aligning the thermal plane of the insulation and window, the overall efficiency of the building envelope is enhanced. Constructed with a structural composite metal hybrid sub-framing and complemented by compatible accessories, the GreenGirt CMH XO system not only improves thermal efficiency but also bolsters structural integrity.



The Problem: Thermal Efficiency Loss at Windows

Legacy materials such as metal angles and wood blocks prevent the thermal plane of the window from lining up with the continuous insulation, resulting in up to 55% energy loss for the opening.

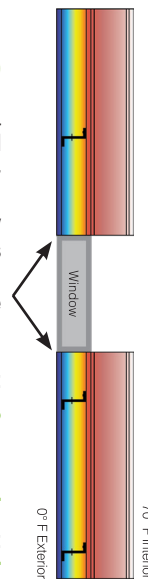
Efficiency: **45%**
 Wall Cavity Temp. Difference: **29.3° F**
 Fastener Temp: **40.7° F**



The Solution: GreenGirt CMH XO

GreenGirt CMH XO is a structural composite metal hybrid insulated framing system for windows and openings, bringing the thermal plane of the window in line with the continuous insulation, while maximizing the thermal efficiency to more than 90% for the opening.

Efficiency: **96.7%**
 Wall Cavity Temp. Difference: **8.7° F**
 Fastener Temp: **62.1° F**



Thermal Efficiency



Structurally Engineered



Fire Resistant



Building Health



Fastener Retention



Durability



Environmental Impact



Ease of Installation

Supported by expert engineering, this system seamlessly integrates into the building's façade, providing a sophisticated and efficient solution to optimize window and opening performance.



Declare.

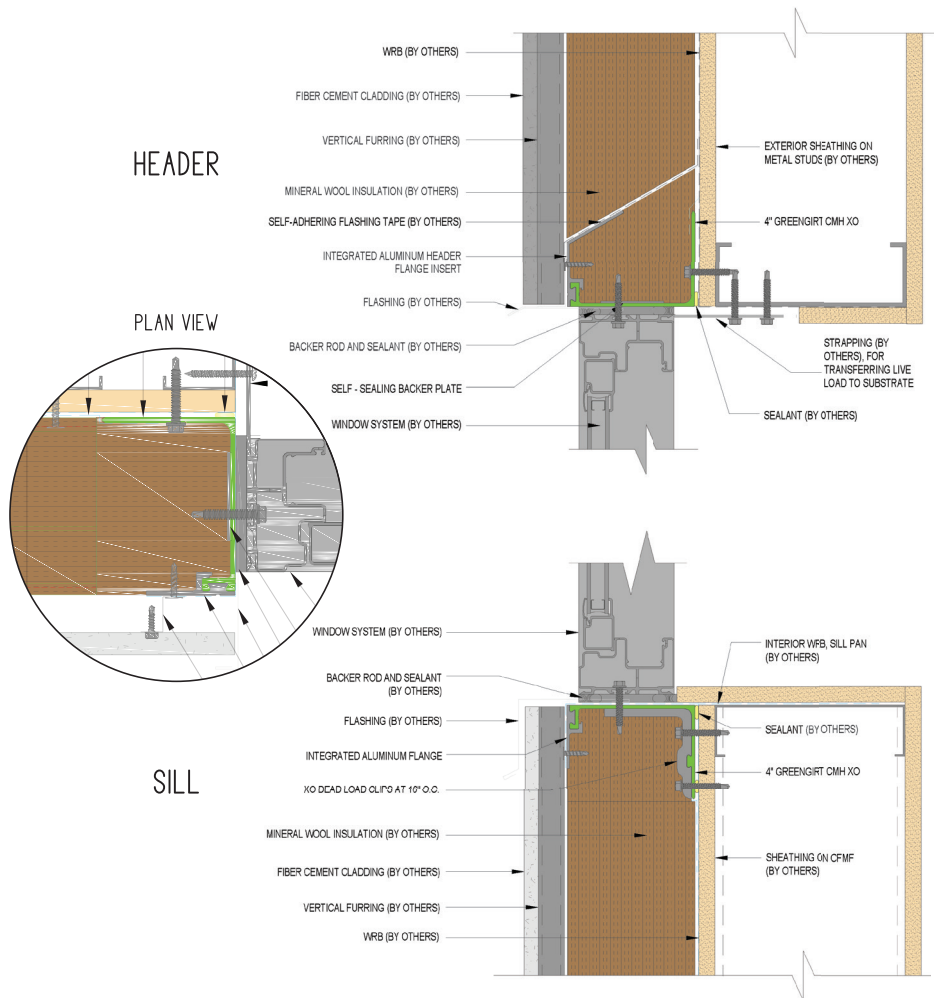
Doubling Thermal Efficiency at Windows

GreenGirt CMH XO™ continuous insulation system for windows

System Benefits:

- ⌘ Designed for punched openings, storefronts, curtain walls, and ribbon windows
- ⌘ Eliminates thermal bridging
- ⌘ Compatible with new or retrofit construction
- ⌘ High-performance structural composite metal hybrid framing
- ⌘ Environmentally friendly, recyclable, and manufactured net zero
- ⌘ Thermal plane of the window lines up with the thermal plane of the insulation
- ⌘ Universal compatibility with substrates, cladding, insulation, and windows
- ⌘ NFPA 285 compliant
- ⌘ No through-wall metal or through-insulation fasteners
- ⌘ Eliminates metal angles and wood blocking
- ⌘ Moisture control
- ⌘ Easy to install

GreenGirt CMH XO Window Details:



Gun Lake Casino Hotel & Natatorium

Wayland, MI

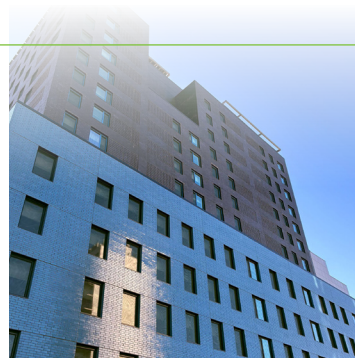
GreenGirt CMH XO System
+ GreenGirt CMH System



Indiana Law Enforcement Academy

Plainfield, IN

GreenGirt CMH XO System
+ SMARTci System



Sutphin Senior Residence

Queens, NY

GreenGirt CMH XO System



Mt. Hope Elementary School

Lansing, MI

GreenGirt CMH XO System
+ GreenGirt CMH System



GreenGirt.com

959 Industrial Drive, Allegan, MI 49010 • (269) 355-1818

Patents: GreenGirt.com/patents/

*Disclaimer: Thermal models are based on a 70° F temperature difference.
© 2026 Advanced Architectural Products. All rights reserved.

Made in America