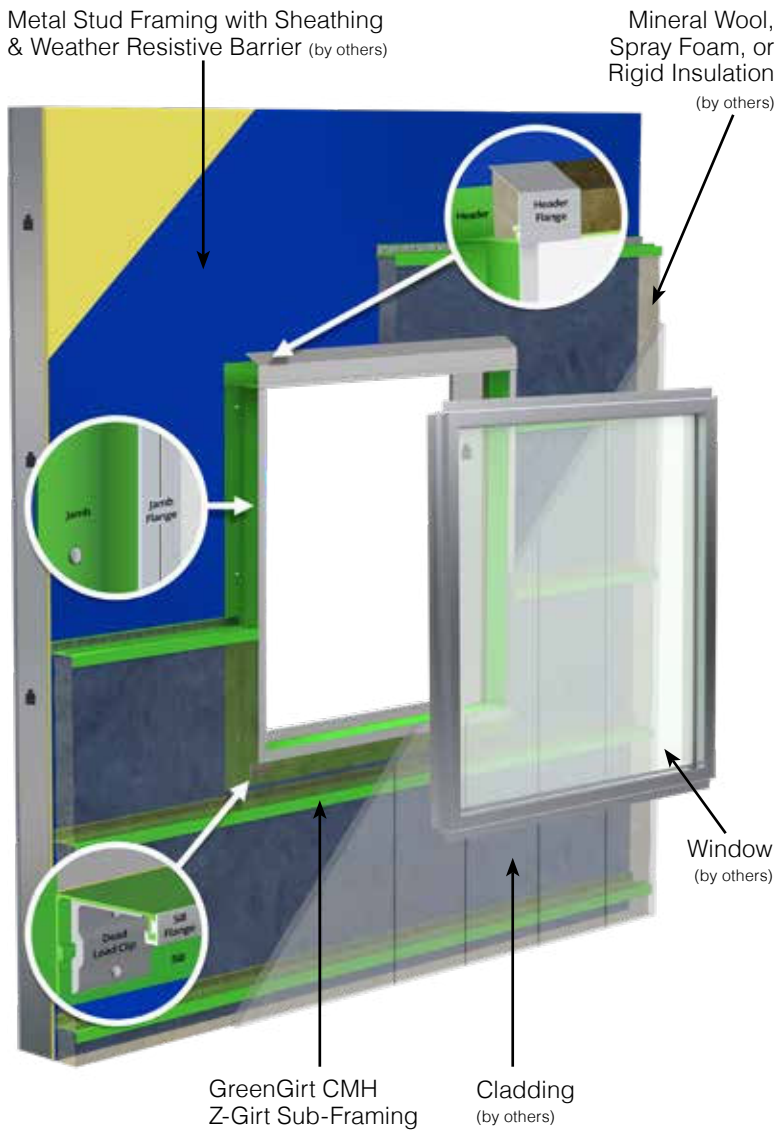


Doubling Thermal Efficiency at Windows

Structural Support System Providing a Thermal Break by Bringing Windows into Alignment with the Continuous Insulation

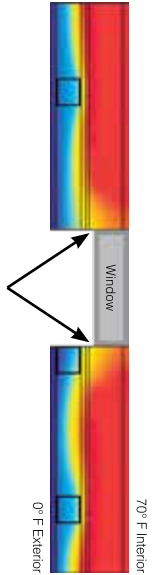
Windows and openings play a significant role in the overall efficiency of a building envelope. The GreenGirt XO continuous insulation system for windows addresses the decades-old issue of significant thermal loss at openings by eliminating through-wall metal, through-insulation fasteners, conductive metal angles, and inefficient wood-blocking.



The Problem: Thermal Efficiency Loss at Windows

Legacy materials such as metal angles and wood blocks prevent the thermal plane of the window from lining up with the continuous insulation, resulting in up to 40% or more energy loss for the opening.

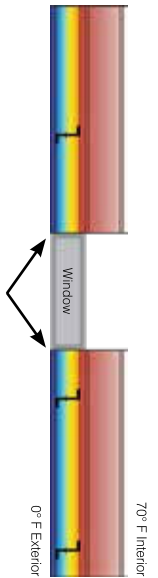
Efficiency: **45%**
 Wall Cavity Temp. Difference: **29.3° F**
 Fastener Temp: **40.7° F**



The Solution: GreenGirt XO

GreenGirt XO is a composite metal hybrid (CMH) transition structural framing for windows and openings, bringing the thermal plane of the window in line with the continuous insulation, and maximizing the thermal efficiency to more than 90% for the opening.

Efficiency: **96.7%**
 Wall Cavity Temp. Difference: **8.7° F**
 Fastener Temp: **62.1° F**



Thermal Efficiency



Structurally Engineered



Fire Resistant



Building Health



Fastener Retention



Durability



Environmental Impact



Ease of Installation

GreenGirt XO can more than double the R-value of a window opening by aligning the thermal plane of the window with the CI system, eliminating thermal transfer at the window framing. GreenGirt XO provides a structural support system that eliminates the need for through-wall metal or through-insulation fasteners.



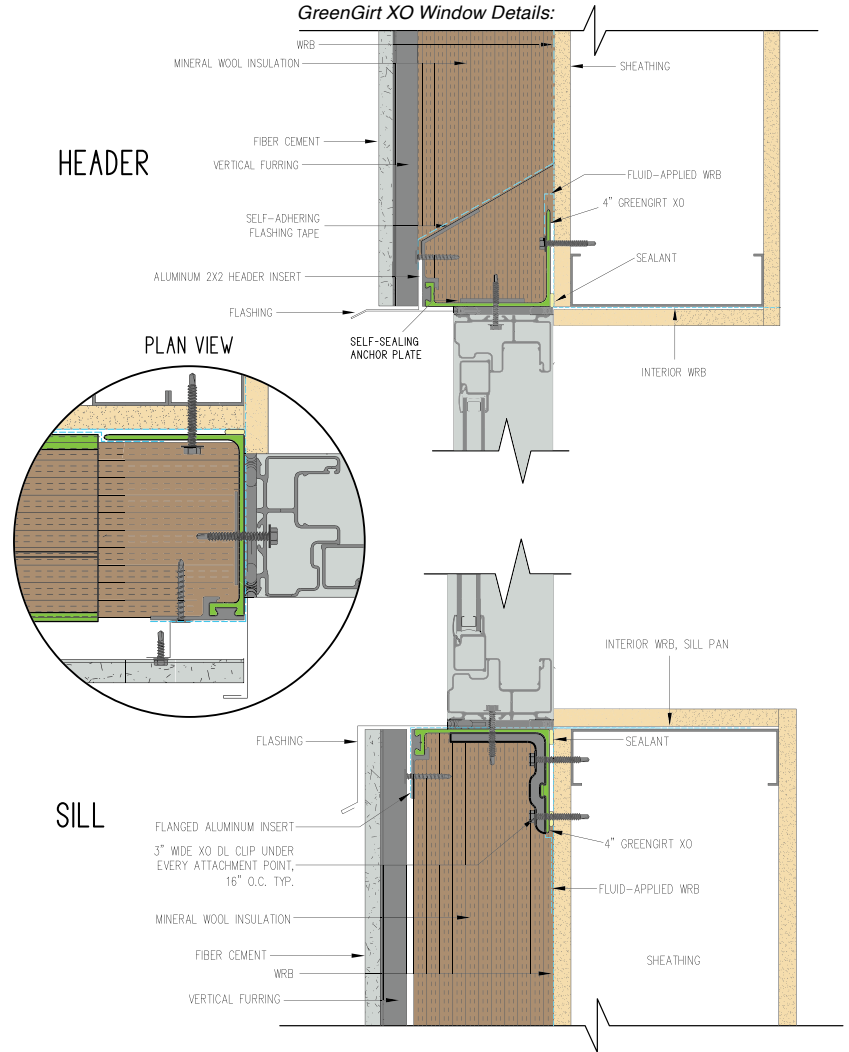
Declare.

Structural Support System for Window

GreenGirt® CMH Thermally Isolated Transition Framing for Window Openings

System Benefits:

- ⌘ Designed for punched openings, storefronts, curtain walls, and ribbon windows
- ⌘ Eliminates thermal bridging
- ⌘ Compatible with new or retrofit construction
- ⌘ High-performance structural composite metal hybrid (CMH) framing
- ⌘ Environmentally friendly, recyclable, and manufactured net zero
- ⌘ Thermal plane of the window lines up with the thermal plane of the insulation
- ⌘ Universal compatibility with substrates, cladding, insulation, and windows
- ⌘ NFPA 285 compliant
- ⌘ No through-wall metal or through-insulation fasteners
- ⌘ Eliminates metal angles and wood blocking
- ⌘ Moisture control
- ⌘ Easy to install



Betances Residence
Bronx, NY
GreenGirt XO System



**Greater Lansing Hospital
McLaren Health**
Lansing, MI
GreenGirt XO System



**Tointon Academy
of Pre-Engineering**
Denver, CO
SMARTci 3 in 1
+ GreenGirt XO System



**Northwestern Medicine
Old Irving Park Outpatient Center**
Chicago, IL
GreenGirt XO System



SMARTci Systems + GreenGirt
959 Industrial Drive, Allegan, MI 49010 • (269) 355-1818
GreenGirt.com

Patents: GreenGirt.com/Patents

*Disclaimer: Thermal models are based on a 70° F temperature difference.
© Copyright 2023 by Advanced Architectural Products. All rights reserved.

Made in America