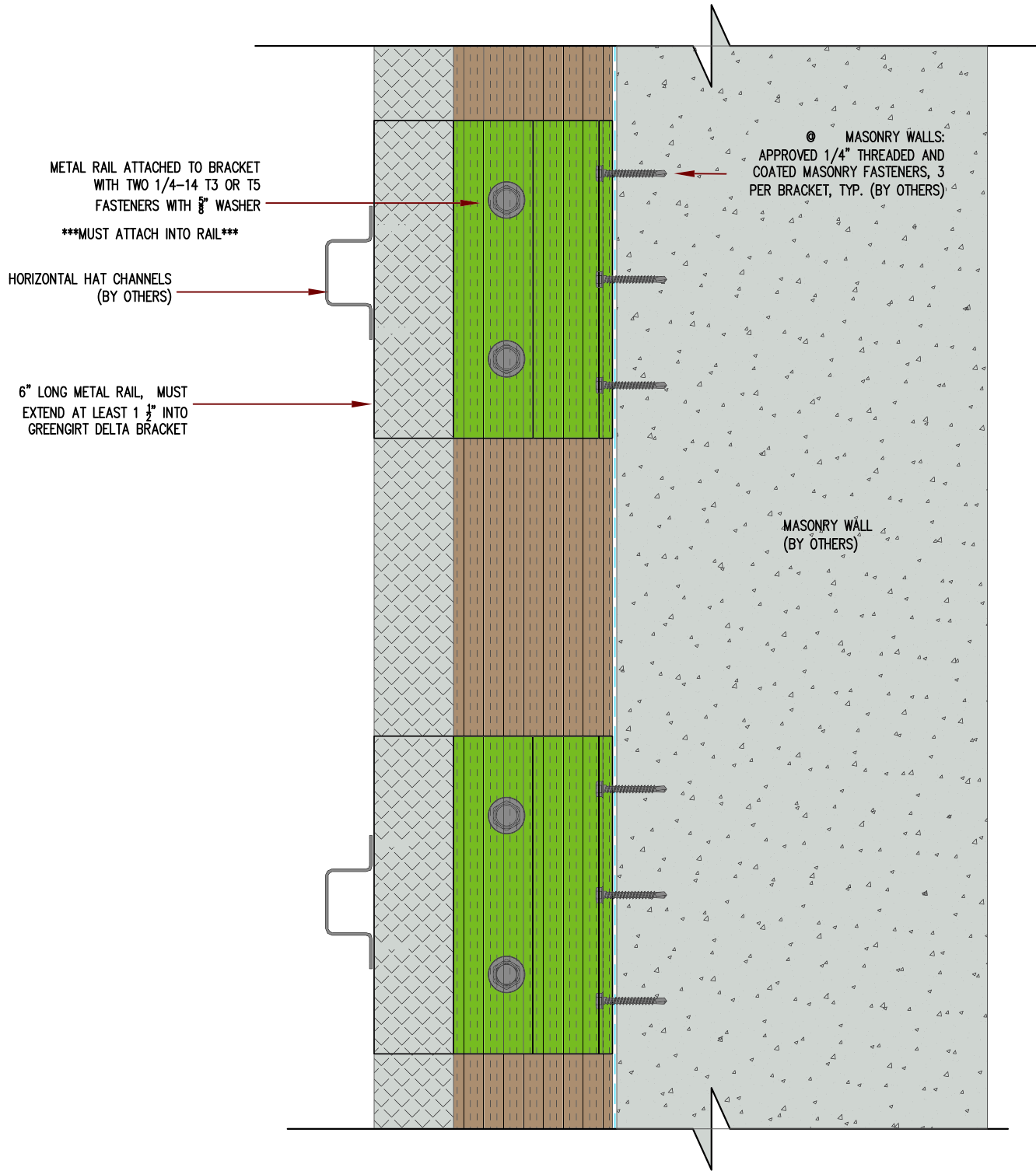
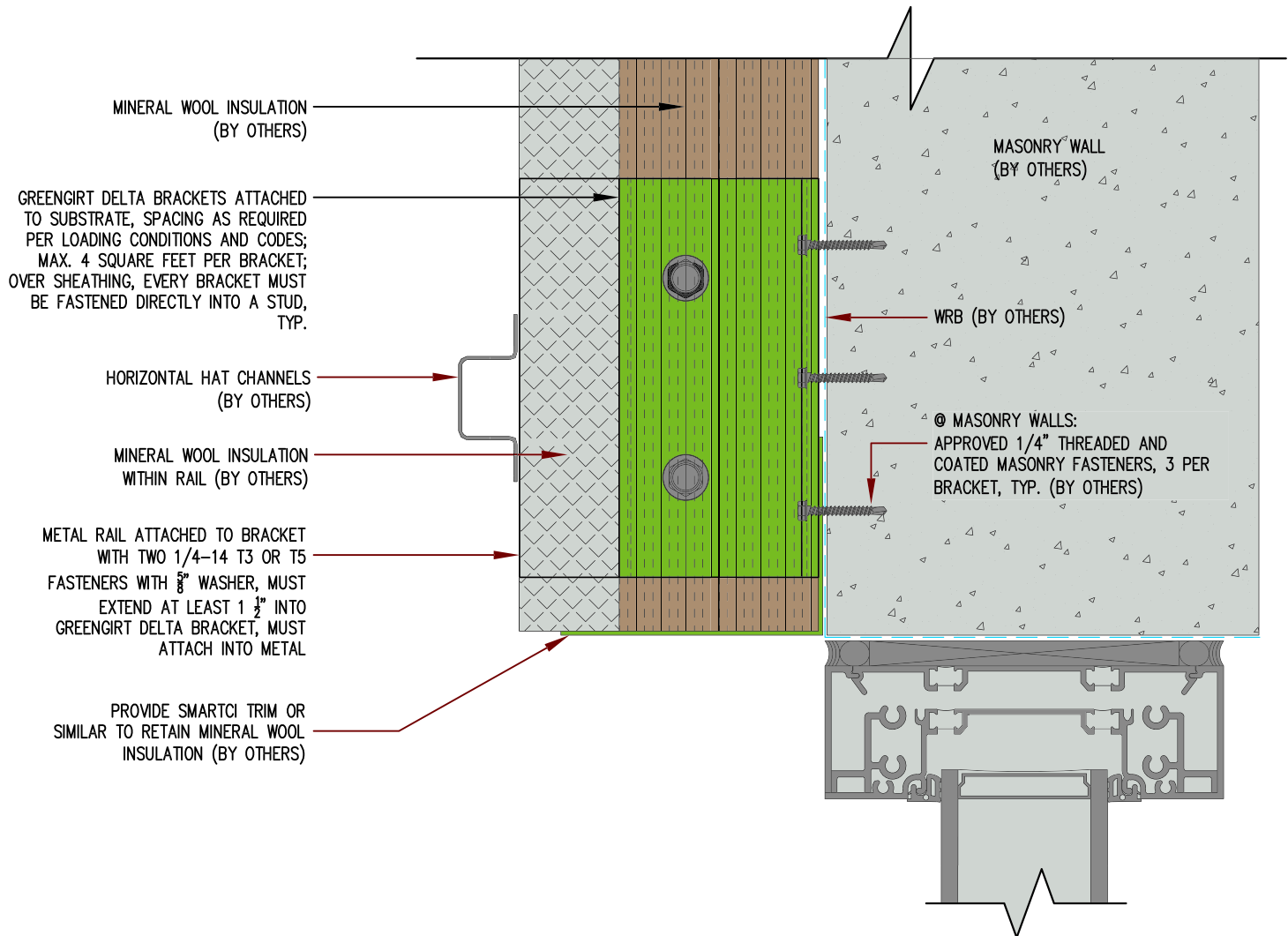


NOTE: DETAILS ARE PROVIDED FOR INFORMATION ONLY, AND ARE SUBJECT TO CHANGE WITHOUT NOTICE. SPECIFIC PROJECT ENGINEERING BY OTHERS WILL ADDRESS ATTACHMENT SPACING, ORIENTATION AND LOADING. CONTACT ADVANCED ARCHITECTURAL PRODUCTS FOR FURTHER DETAILS, AND TO INQUIRE ABOUT UPDATES AND REVISIONS. ADVANCED ARCHITECTURAL PRODUCTS IS ONLY RESPONSIBLE FOR THE THERMAL EXPANSION OF THE SUBFRAMING OF THE ADJUSTABLE SYSTEM. THE CLADDING MANUFACTURER IS RESPONSIBLE FOR HANDLING THERMAL EXPANSION OF THE CLADDING AS WELL AS THERMAL EXPANSION COMPATIBILITY WITH THE ADJUSTABLE SUBFRAMING.



SUBSTRATE: MASONRY	INSULATION: MINERAL WOOL
CLADDING:	DATE
GREENGIRT DELTA BRACKET SIZE: 3"	ORIENTATION: HZ
<div>DELTA SLIDER (BTM OF RAIL)</div> <div>NOT TO SCALE</div>	



GreenGirt CMH Delta™

GreenGirt.com

(269) 355-1818

SUBSTRATE: **MASONRY**

CLADDING:

GREENGIRT DELTA BRACKET SIZE: 3"

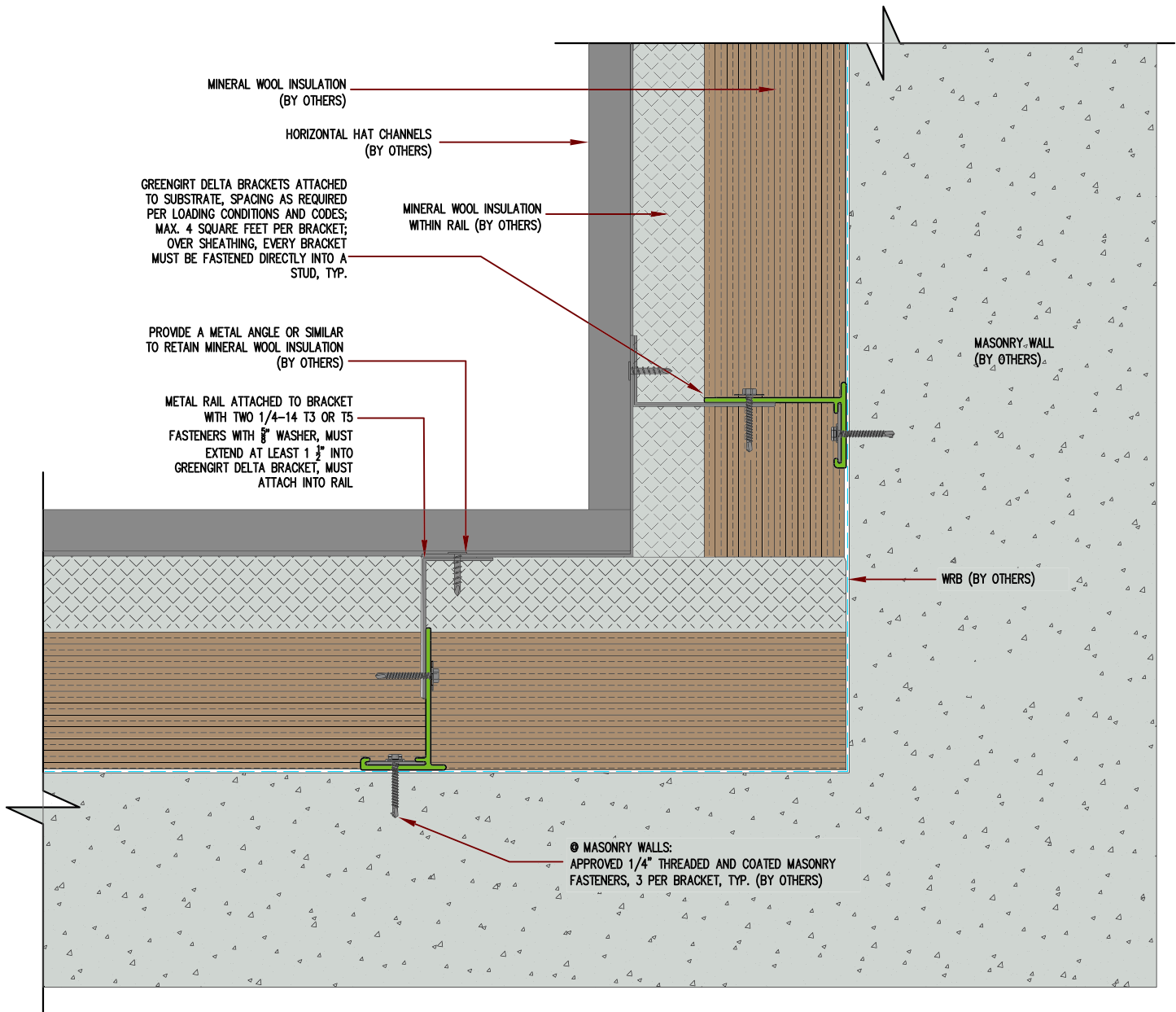
INSULATION: MINERAL WOOL

DATE

ORIENTATION: HZ

HEADER DETAIL

NOT TO SCALE



GreenGirt CMH Delta™

GreenGirt.com

(269) 355-1818

SUBSTRATE: **MASONRY**

CLADDING:

GREENGIRT DELTA BRACKET SIZE: 3"

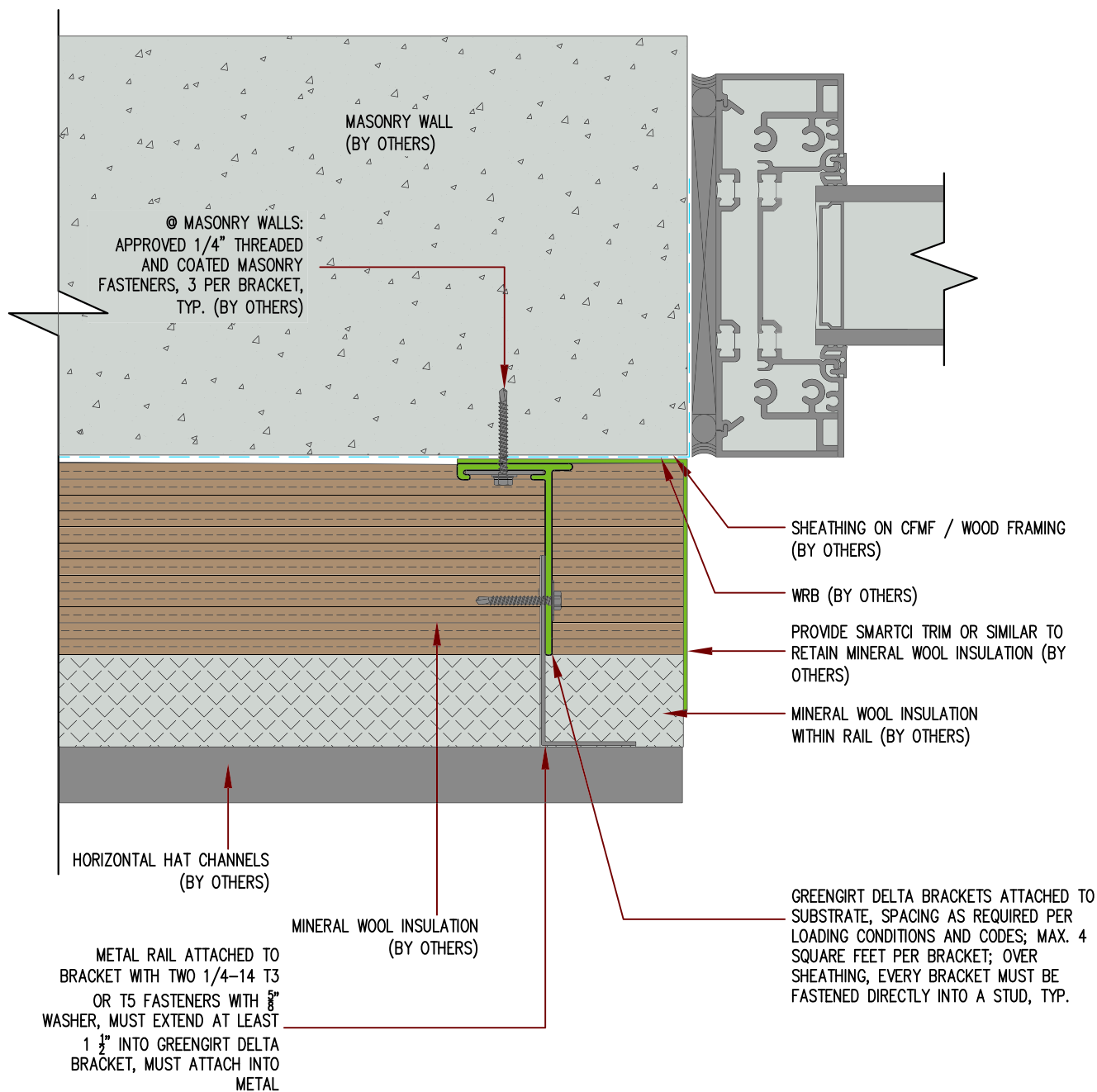
INSULATION: MINERAL WOOL

DATE

ORIENTATION: HZ

INSIDE CORNER DETAIL

NOT TO SCALE



GreenGirt CMH Delta™

GreenGirt.com

(269) 355-1818

SUBSTRATE: **MASONRY**

CLADDING:

GREENGIRT DELTA BRACKET SIZE: 3"

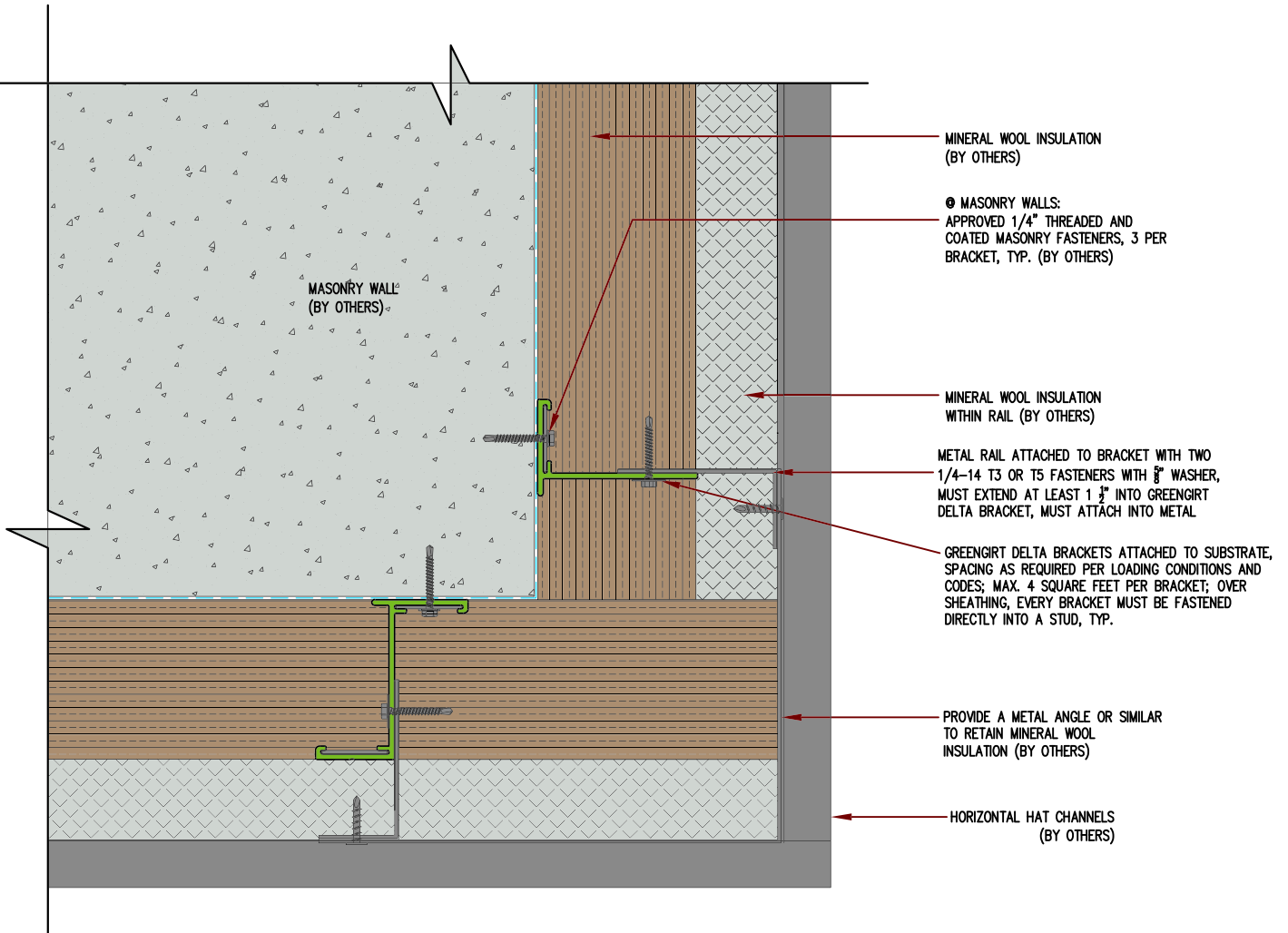
INSULATION: MINERAL WOOL

DATE

ORIENTATION: HZ

JAMB DETAIL

NOT TO SCALE



GreenGirt CMH Delta™

GreenGirt.com

(269) 355-1818

SUBSTRATE: **MASONRY**

CLADDING:

GREENGIRT DELTA BRACKET SIZE: 3"

INSULATION: MINERAL WOOL

DATE

ORIENTATION: HZ

OUTSIDE CORNER DETAIL

NOT TO SCALE

