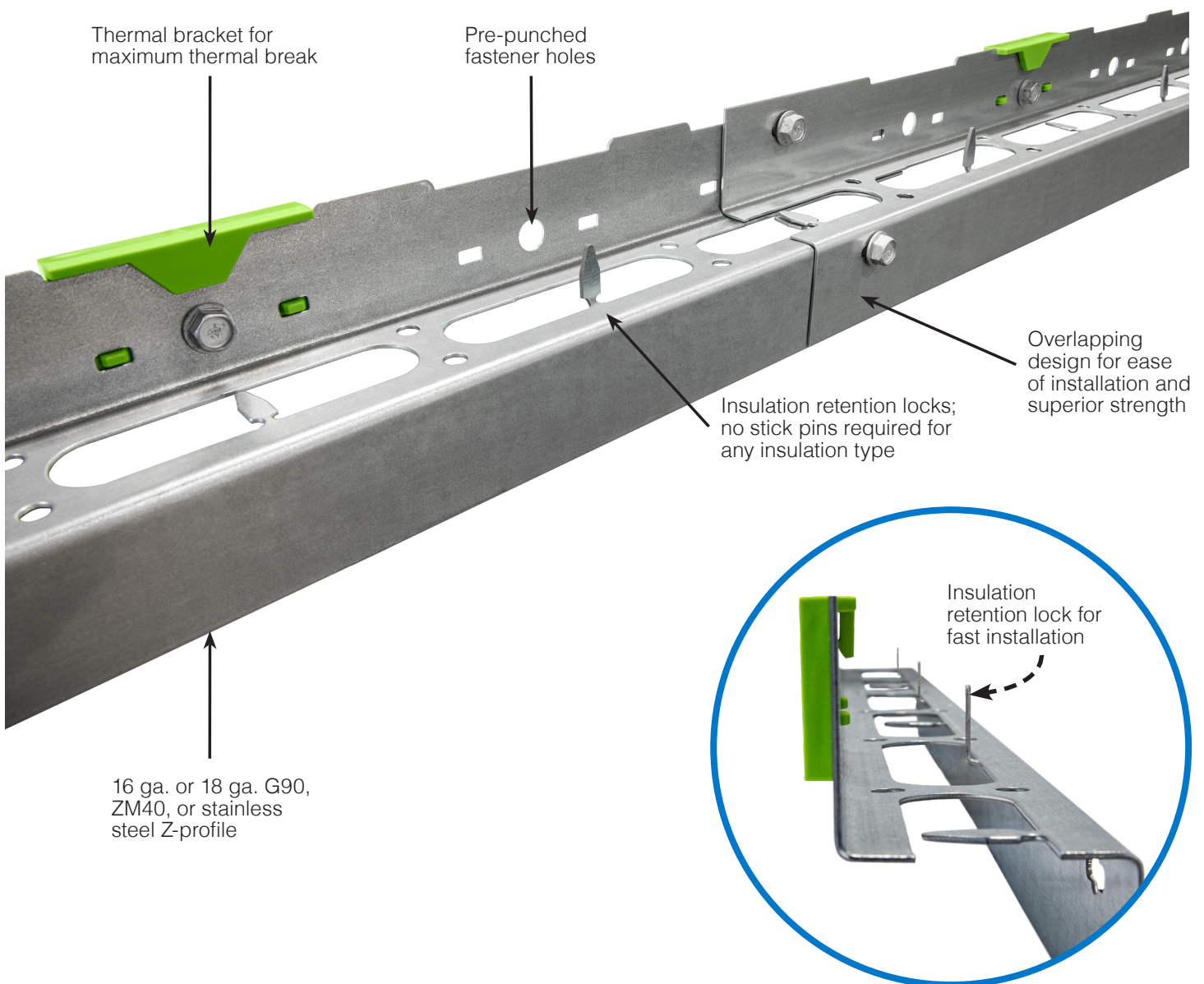


GreenGirt Steel™ Continuous Insulation System

Installs 2X Faster – 20-50% Stronger – Highest Effective R-Value for a Steel-Based System

A continuous insulation system designed to provide improved energy efficiency of buildings and best-in-class structural capacity – 20–50% stronger than other perforated thermal metal Z-girts. Comprised of engineered steel Z-girt sub-framing with thermal brackets, compatible accessories, and expert engineering support, the system works with any type of insulation and provides an entry-level alternative to achieve code compliant energy efficiency.

Designed for fans of steel construction, the new GreenGirt Steel system's overlapping design is optimized to make installation a breeze and up to 2X faster than other systems. The integrated insulation retention locks eliminate the need for stick pins/fasteners to hold insulation—eliminating the thousands of thermal bridges common in systems requiring the use of stick pins/fasteners, offering the highest effective R-value for a steel-based system. GreenGirt Steel's minimal design and integrated thermal brackets reduce energy transfer helping buildings achieve their energy efficiency goals.



GreenGirt Steel™

Installs up to 2X Faster – 20-50% Stronger – Highest Effective R-Value for a Steel-Based System

System Benefits

- ⌘ 20–50% stronger than other perforated thermal metal Z-girts
- ⌘ Installs up to 2X faster than other systems
- ⌘ Thermal expansion and contraction at connections
- ⌘ Insulation retention lock holds insulation in place
- ⌘ Highest effective R-value for a steel-based system, achieving thermal efficiencies into the 90%_s
- ⌘ 1.5"–5" depths available
- ⌘ Free of Red List materials
- ⌘ Overlapping design optimized for simple one-person installation
- ⌘ Thermal bracket that won't crush or creep over time
- ⌘ Compatible/optional accessories and hat channels available
- ⌘ Engineering support from A2P included
- ⌘ Meets ASCE structural design guidelines

Configuration Options

Orientation	Horizontal, vertical
Material composition	16 ga. or 18 ga. G90, ZM40, or stainless steel with thermal bracket
Length	8' standard (includes additional 4" for overlap)
Depths	1.5", 2", 2.5", 3", 3.5", 4", 4.5", 5"
Installation fastener	Tek #14 recommended
Thermal expansion	Integrated perforations



Structural Integrity



Fastener Retention



Thermal Efficiency



Durability



Fire Resistant



Environmental Impact



Building Health



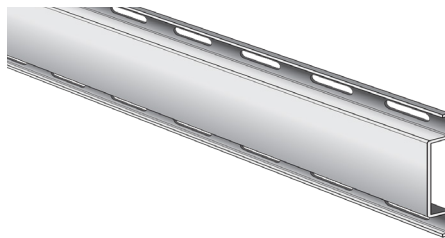
Ease of Installation

Accessories: Optional Hat Channels

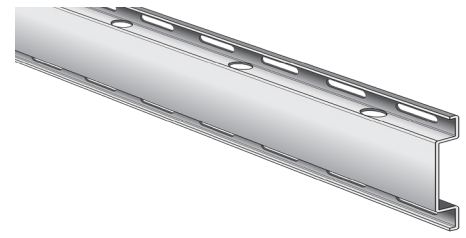
All hat channels are available in 18 ga. steel, mill or black color, standard 10' length, with 2", 3", 4", and 5" width options, and in various depths up to 1.5".



Hat channel, standard



Hat channel, pre-punched



Hat channel, pre-punched with drainage holes



GreenGirt.com

959 Industrial Drive, Allegan, MI 49010 • (269) 355-1818

Patents Pending

Made in America